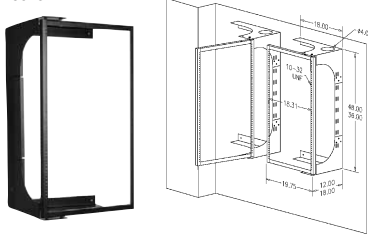
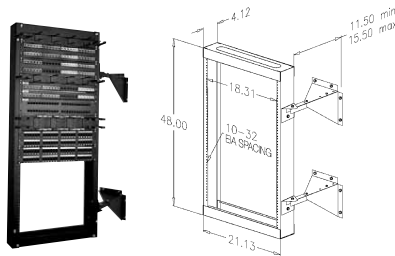


## Wall Mount Racks & Accessories

BWR-3619



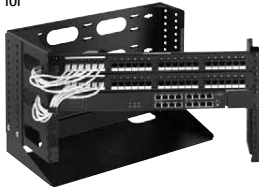
BWR-4819 – Swing-out Distribution Racks  
19" x 48" Depth Range 11.5" to 15.5" (0.29 m - 0.39 m)



AX100785 Wall Mount Bracket, 2U



BWR-1219 – 12" (0.30 m) Wall Mount Rack  
Hinged Mounting for Easy Access



Adjustable Shelf  
2" - 6" (0.05 m - 0.15 m)



AX102514 – 4U Wall Mount Bracket w/2U Swivel



BER-6X6 –  
6U Wall Mount Rack  
w/6U and 6U Front

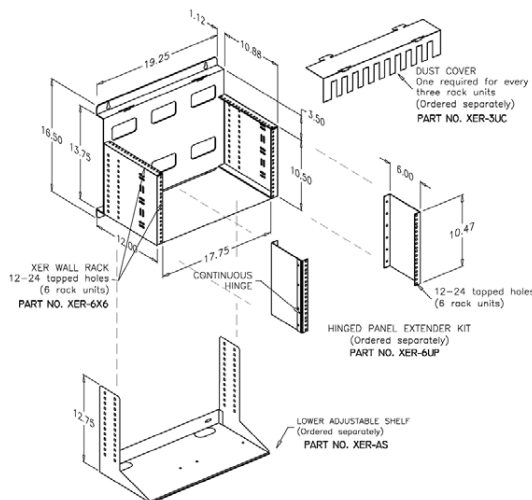


### Wall Mount Racks

Wall mount racks are available in two styles: hinged and swing out. The hinged rack is 12" (0.30 m) in height and features an adjustable lower shelf. The swing out rack is available in heights of 36" (0.91 m) and 48" (1.21 m) with 19" (0.48 m) mounting rails. 2U, 4U and 6U wall mount racks are also offered.

Description	Mounting	Weight		Belden Part Number
		lbs.	kg	
<b>Swing Out Rack</b>				
36" (0.91 m) Wall Mount Swing-out Rack, 19" (0.48 m) Mounting Rails x 12" (0.30 m) Fixed Depth	18U	30	14	<b>BWR-3619-12</b>
36" (0.91 m) Wall Mount Swing-out Rack, 19" (0.48 m) Mounting Rails x 18" (0.45 m) Depth	18U	30	14	<b>BWR-3619-18</b>
48" (1.21 m) Wall Mount Swing-out Rack, 19" (0.48 m) Mounting Rails, 11.5" - 15.5" (0.29 m - 0.39 m) Adjustable Depth	25U	39	18	<b>BWR-4819</b>
48" (1.21 m) Wall Mount Swing-out Rack, 19" (0.48 m) Mounting Rails x 12" (0.30 m) Fixed Depth	25U	39	18	<b>BWR-4819-12</b>
48" (1.21 m) Wall Mount Swing-out Rack, 19" (0.48 m) Mounting Rails x 18" (0.45 m) Depth	25U	39	18	<b>BWR-4819-18</b>
<b>Hinged Rack</b>				
12" (0.30 m) Wall Mount Rack, Hinged 19" (0.48 m) Mounting Rails x 9" (0.22 m) Fixed Depth	6U	26	12	<b>BWR-1219</b>
<b>Wall Mount Bracket</b>				
2U Wall Mount Bracket, Black	2U	4	2	<b>AX100785</b>
4U Wall Mount Bracket, Black	4U	8	4	<b>AX100786</b>
4U Wall Mount Bracket w/2U Swivel				<b>AX102514</b>
<b>6U Wall Mount Rack</b>				
6U Wall Mount Rack with 6U Top and 6U Front Rack Space, Tapped 12-24 EIA	6" (0.15 m)	17	8	<b>BER-6X6</b>
Bottom Accessory Shelf	-	-	-	<b>BER-AS</b>
Front Mounted Swing-out Patch Panel Kit, 6U	-	-	-	<b>BER-6UP</b>
Single, 3U Space Top Dust Cover	-	-	-	<b>BER-3UC</b>

These products are in the process of being assessed for RoHS compliance. Please check our website for the most current RoHS status.



For more information, contact Belden Technical Support +31-77-3875-414 • [www.belden-emea.com](http://www.belden-emea.com)