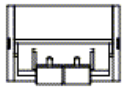


## AX101937 Modular Connectors - MediaFlex Multimedia Angled Insert Duplex SC Singlemode



For more Information  
please call

1-800-Belden1



### General Description:

MediaFlex Multimedia Angled Insert Duplex SC Singlemode

### Usage (Overall)

Suitable Applications:	Fiber To The Desk
Related Parts:	MediaFlex Faceplate

### Physical Characteristics (Connectivity)

#### Dimensions

Dimensions:

Height (mm)	Width (mm)	Depth (mm)
35.814	52.070	31.394

#### Materials

Materials:

Description	Type	Material	Color
Front Connection	SC-DUPLEX	Plastic - UL94V-0	Blue
Rear Connection	SC-DUPLEX	Plastic - UL94V-0	Blue
Sleeve		Zirconia-Ceramic	
Insert		Plastic - UL94V-0	

#### Color

Color:	Elec. White
--------	-------------

#### Weight

Weight:	0.020 kg
---------	----------

#### Packaging

Packaging:	Individually packaged in a suitable plastic bag.
------------	--

### Mechanical Characteristics (Connectivity)

Storage Temperature Range:	-40°C To +70°C
Installation Temperature Range:	-10°C To +60°C
Operating Temperature Range:	-10°C To +60°C

### Applicable Specifications and Agency Compliance (Overall)

#### Applicable Standards & Environmental Programs

EU Directive 2002/95/EC (RoHS):	Yes
EU RoHS Compliance Date (mm/dd/yyyy):	07/01/2006
MII Order #39 (China RoHS):	EUP 50
Safety Listing:	ACA, Bi-national Standard Listed

#### Suitability

Suitability - Indoor:	Yes - Indoor
-----------------------	--------------

### Transmission Characteristics (Connectivity)

### Notes (Overall)

Notes: For proper installation refer to Installation Guide PX102063 available on our web site at <http://www.belden.com/pdfs/Techpprs/InstallationGuide.pdf>

### Product Family

Part Number List:

Item Number	Color
AX101935	Gray
AX101936	Almond
AX101937	Elec White
AX101938	Black
AX102649	Ivory

## METRIC MEASUREMENT VERSION

### AX101937 Modular Connectors - MediaFlex Multimedia Angled Insert Duplex SC Singlemode

AX105638-GY	Gray
AX105638-AL	Almond
AX105638-EW	Elec White
AX105638-BK	Black

#### Put Ups and Colors:

Item #	Putup	Ship Weight	Color	Notes	Item Desc
AX101937	1 EA	0.044 LB			MFLEX SC DX SM INSERT ELEC WHI

Revision Number: 1    Revision Date: 09-13-2013

© 2016 Belden, Inc.  
All Rights Reserved.

Although Belden makes every reasonable effort to ensure their accuracy at the time of this publication, information and specifications described herein are subject to error or omission and to change without notice, and the listing of such information and specifications does not ensure product availability. Belden provides the information and specifications herein on an "AS IS" basis, with no representations or warranties, whether express, statutory or implied. In no event will Belden be liable for any damages (including consequential, indirect, incidental, special, punitive, or exemplary damages) whatsoever, even if Belden has been advised of the possibility of such damages, whether in an action under contract, negligence or any other theory, arising out of or in connection with the use, or inability to use, the information or specifications described herein. All sales of Belden products are subject to Belden's standard terms and conditions of sale. Belden believes this product to be in compliance with EU RoHS (Directive 2002/95/EC, 27-Jan-2003). Material manufactured prior to the compliance date may be in stock at Belden facilities and in our Distributor's inventory. The information provided in this Product Disclosure, and the identification of materials listed as reportable or restricted within the Product Disclosure, is correct to the best of Belden's knowledge, information, and belief at the date of its publication. The information provided in this Product Disclosure is designed only as a general guide for the safe handling, storage, and any other operation of the product itself or the one that it becomes a part of. This Product Disclosure is not to be considered a warranty or quality specification. Regulatory information is for guidance purposes only. Product users are responsible for determining the applicability of legislation and regulations based on their individual usage of the product.