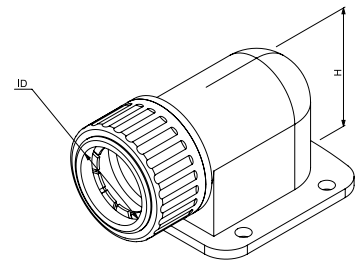


# Data sheet

|                |  |
|----------------|--|
| ID             | <b>SFL GY</b>  |
| Description    | gland with flange, halogen-free  |
| Properties     | for corrugated conduits, with patented plug-in system for quick-fit assembly, pull-tight connection, with 4 fixing holes |
| Colour         | grey, similar to RAL 7001  |
| Fire Behaviour | non flame propagating  |
| Classification | 22434  |



Norms: ÖVE/ÖNORM EN 61386-1:2009, ÖVE/ÖNORM EN 61386-23:2012

halogenfree according to EN 60754



|                                       |                                   |                |
|---------------------------------------|-----------------------------------|----------------|
| Working temperature<br>-25 to +105 °C | Degree of protection (IP)<br>IP54 | UV-Level<br>L2 |
|---------------------------------------|-----------------------------------|----------------|

| Art. no. | Nominal diameter | Thread connection size | Total height | Small Package | Large Package |
|----------|------------------|------------------------|--------------|---------------|---------------|
| 020 092  | 20 mm            | M20 x 1.5              | 35,9 mm      | 50 pc         | 400 pc        |
| 016 520  | 25 mm            | M25 x 1.5              | 42 mm        | 25 pc         | 300 pc        |
| 016 521  | 32 mm            | M32 x 1.5              | 50 mm        | 20 pc         | 160 pc        |
| 015 072  | 25 mm            | M40 x 1.5              | 62 mm        | 10 pc         | 80 pc         |
| 015 073  | 50 mm            | M50 x 1.5              | 76 mm        | 6 pc          | 48 pc         |
| 043 011  | 63 mm            | M63 x 1.5              | 96 mm        | 3 pc          | 24 pc         |

## Areas of Recommended Application

| Area   |       |
|--|-------|
| Approved in combination with protective conduit CSA              | False |
| Approved in combination with protective conduit UR               | False |
| Approved in combination with protective conduit VD TÜV/GGVS      | False |
| Approved in combination with protective conduit DIN EN 61386-23  | True  |
| Approved in combination with protective conduit Lloyd's Register | False |

## Further technical details

| Details            |            |
|--------------------|------------|
| Model              | 90°-elbow  |
| Revolving thread   | False      |
| Construction type  | Flange     |
| Type of connection | Other      |
| Thread type        | Metric     |
| Material sealing   | No sealing |
| Material           | PA-Blend   |

\*) L1: Indoor use - to avoid UV discoloration (no exposure to direct sunlight).

L2: Partially shaded: Outside, in areas with sun only for two to four hours a day, in shadowy places.

L3: Full sun: To be used also in areas with whole-day exposure to sunlight, e. g. roofs, antenna poles or PV panels.

Civil engineering and road construction products marked "L2" have to be laid in the shortest time possible to ensure color fastness and stability.

All figures refer to standardised test samples and are given to our best knowledge but without further commitment. It is Univolt's belief that information set forth in this Data Sheet is accurate, Univolt, Dietzel GmbH, 1110 Wien, 1. Haidequerstraße 3-5, www.dietzel-univolt.com, makes no warranty, expressed or implied, with respect thereto and disclaims any liability from reliance thereon. All data are subject to change without prior notice.