

CONTEG DATASHEET

TARGETED COOLING

CoolSpot AC-WW

Air-Condition Unit

CONTEG, spol. s r.o.

Headquarters:

Na Vítězné pláni 1719/4
140 00 Prague 4
Czech Republic

Tel.: +420 261 219 182

Fax: +420 261 219 192

Production plant:

K Silu 2179
393 01 Pelhřimov
Czech Republic

Tel.: +420 565 300 300

Fax: +420 565 533 955

conteg@conteg.com

www.conteg.com

Local Branches/Offices

Austria:	+43 170 659 0115
Benelux:	+32 477 957 126
Eastern Europe / Nordics:	+49 172 8484 346
France / Italy / Maghreb:	+33 686 074 386
Germany / Switzerland:	+420 724 723 184
India:	+91 991 6950 773
Middle East:	+971 4445 2838
Russia / CIS:	+7 495 967 3840
Saudi Arabia:	+966 594 30 13 08
Ukraine:	+380 674 478 240

conteg@conteg.com

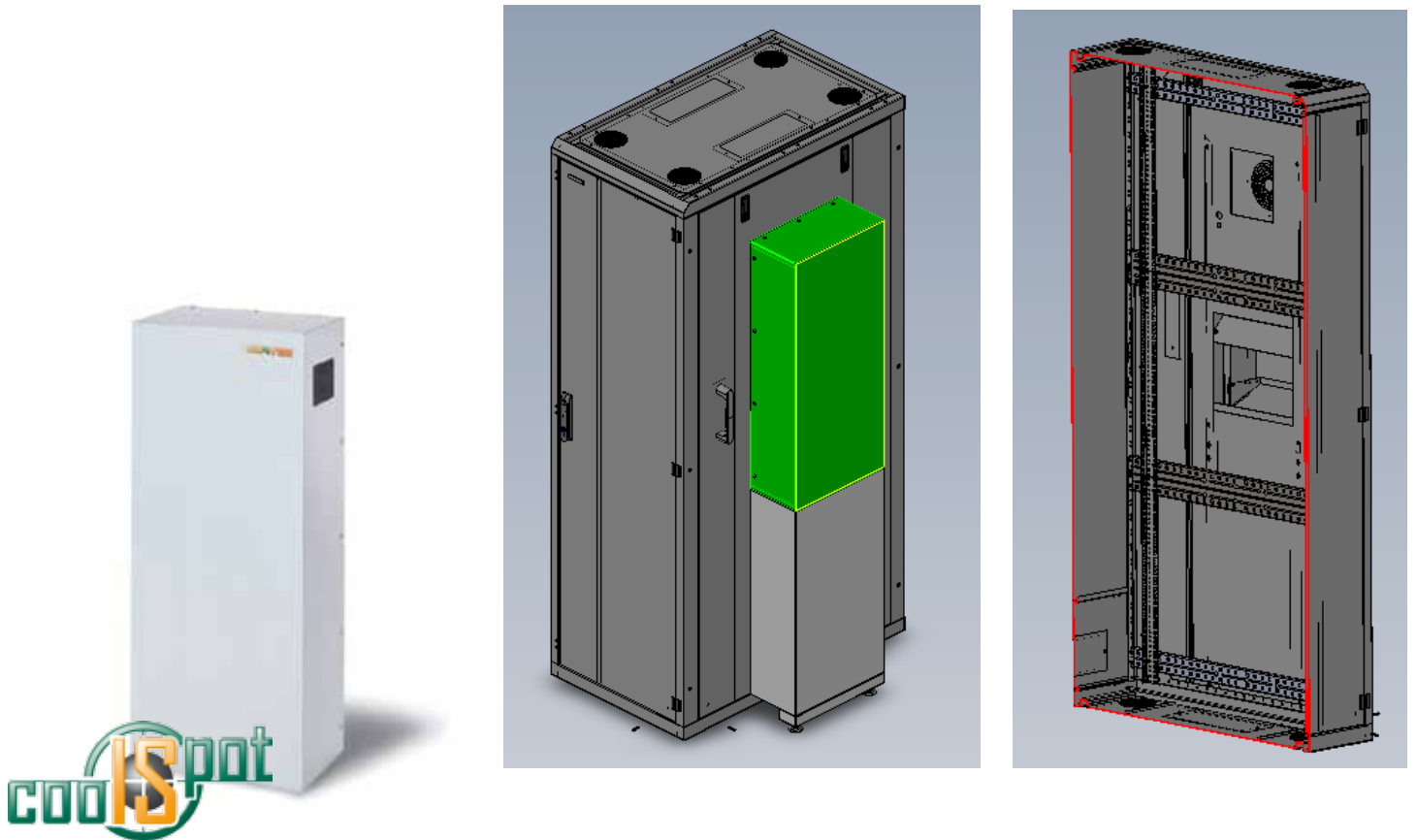
www.conteg.com

CoolSpot AC-WW

Air-Condition Unit

CoolSpot units are designed to maintain temperature inside Conteg cabinets while maintaining low energy consumption. The AC-WW series can be connected to the building's chilled water piping system.

The CoolSpot AC-WW solution is available in cooling capacities, ranging from 870 W to 6700 W (cooling capacity depends on the water and air temperature and water flow). Since the CoolSpot AC-WW cooling unit is installed on the side of the rack, there is no need for overhead clearance. CoolSpot WM-CW cooling units are compatible with the RHF, RDF, RSF, ROF and RMF free-standing rack series.



The CoolSpot AC-WW unit is a chilled water (CW) solution, which is ideally suited for cabinets with insufficient cooling capacities to avoid hot spots. These Conteg CoolSpot AC-WW units emit little noise or heat, making them a perfect fit for busy office environments. When installing these units into closed areas, make sure there is sufficient space on the sides of the cabinets.

These units are designed for projects where there is not enough clearance to install a top-mount solution and cold water is present. Hot air is sucked from the top of the rack, and cold air is delivered to the bottom. This wall mount model can be connected to two CoolSpot AC-WW cooling units in one rack.

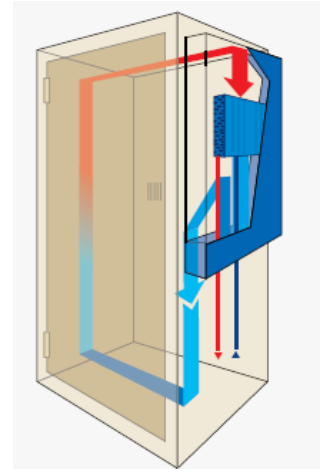
DESCRIPTION:

- Nominal cooling capacity: 0.87 kW, 2.2 kW, 3.1 kW and 6.7 kW.
- Real cooling capacity is continuously adjusted and controlled by water valve.
- The heat exchanger surface was specifically designed to provide the highest possible resistance against clogging.
- The cooling system was designed to operate without filters – reducing maintenance costs.
- Designed for low noise installations – all moving parts (fan) are placed inside the cabinet.
- Heat is transferred to and removed by water – no heat is introduced into the room.
- The cooling unit is easy to use and has multiple setting to regulate the temperature inside the rack.
- This cooling unit can be easily installed in Conteg racks that have already been assembled (retrofit installation possible) – the side panel will be replaced by air conditioning during installation.
- 3m long electrical cable.
- Highest efficiency is achieved if the rack has an IP54 rating. Air flow inside rack must be enabled.

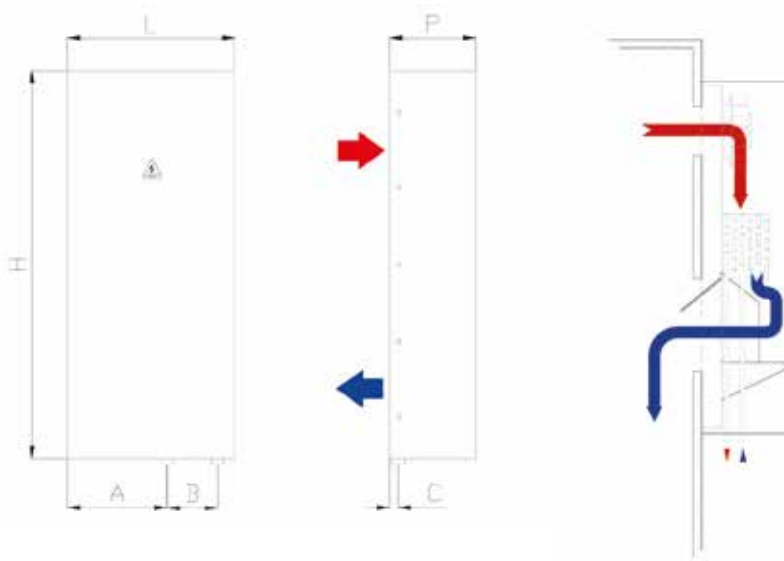
- Removal of condensation buildup: rack must be connected to the building's drainage system.
- CoolSpot units can be easily installed and integrated with the Conteg RAMOS system that remotely monitors the conditions inside the rack.

REGULATION:

- ON/OFF control by solenoid valve – OPEN/SHUT water flow.
- 2-way solenoid valve with gas-loaded mechanical thermostat measuring return air temperature.
- Set point can be adjusted with a screwdriver from 20°C to 46°C.
- Cooling band 4K.
- Water detector – if a high condensation level is detected, solenoid valve will close, while fans keep running.



Dimensions of Air-Condition unit without cabinet's side panel:



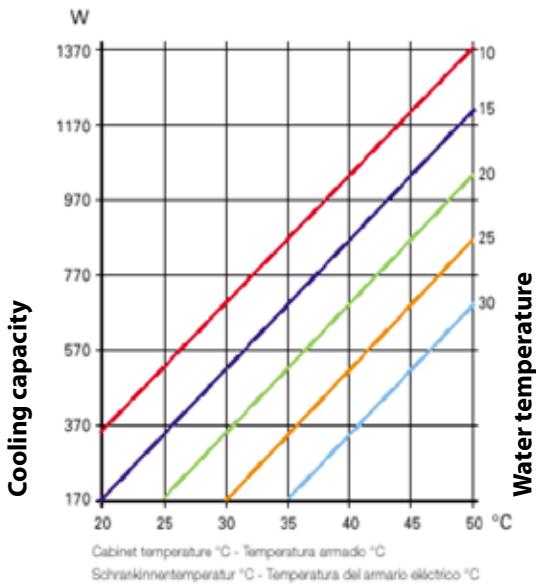
Basic Features of Air-Condition Units AC-WWxx

Feature	M.U.	06	15	25	50
Cooling Capacity (L35W10)	W	870	2200	3100	6700
Power Supply	V/Ph/Hz	230/1/50			
Absorbed Current	A	0,21	0,36	0,38	0,95
Pre-Fuse T	A	2	2	2	4
Height (H)	mm	500	925	925	1101
Latitude (L)	mm	308	400	400	501
Depth (P)	mm	150	205	205	300
Dimension A	mm	49	237,5	237,5	318
Dimension B	mm	130	120	120	120
Dimension C	mm	60	20	20	30
Air Flow	m ³ /h	330	575	860	1450
Absorbed Fan Power	W	35	80	80	215
Water Flow	ltr/h	150	150	500	860
Max. Water Pressure	kPa	500	1000	1000	1000
Water Pressure Drop	kPa	2	30	63	40
Water Connection	" G	3/8	1/2	1/2	1/2
Cabinet Temperature Limits	°C	+10/+50	+10/+50	+10/+50	+10/+50
Protection Degree	IP	55	55	55	55
Noise Level	dB(A)	58	58	58	58
Weight without side panel and water	kg	9	21	22	39

Cooling capacity charts:

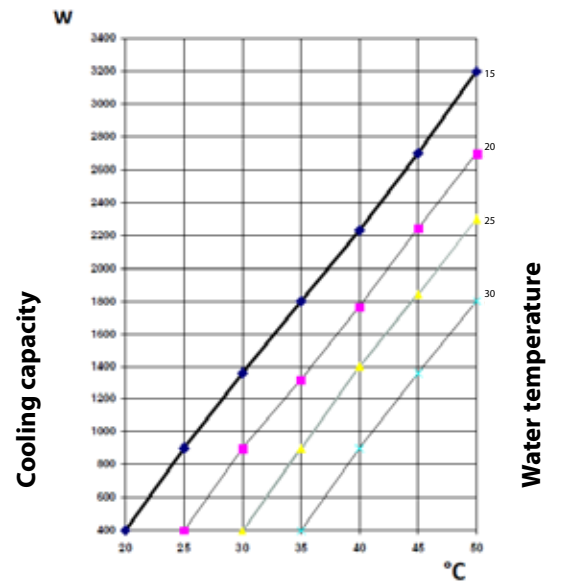
AC-WW06

Cabinet temperature



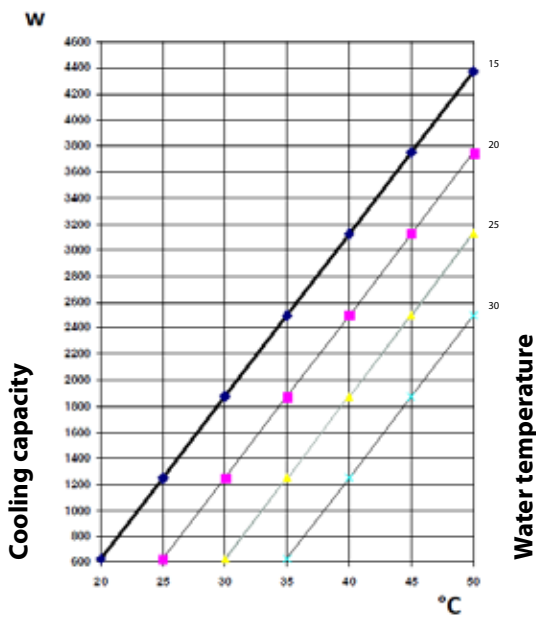
AC-WW15

Cabinet temperature



AC-WW25

Cabinet temperature



AC-WW50

Cabinet temperature

