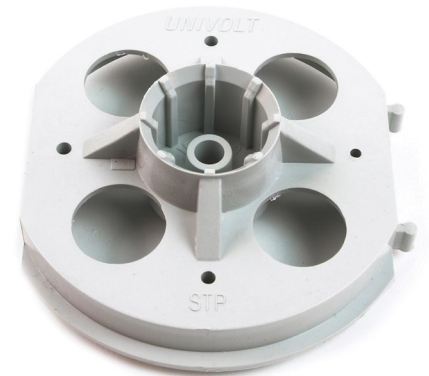


# Data sheet

ID	<b>STP 20 GR</b>
Description	counter support
Properties	allows counter supports for concrete boxes on the opposing formwork, interlinkable in 71 mm distance, mounting with nails, expansion cartridges or welded threaded bolts, with integrated spout for the use of DR 20 spacer tube
Colour	light grey, similar to RAL 7035



Art. no.	Dimension	Small Package	Large Package
026 316	20	25 pc	250 pc

## Further technical details

Details	
Suitable for built-in installation box	True
Suitable for central conduit box	True
Material	PVC-U