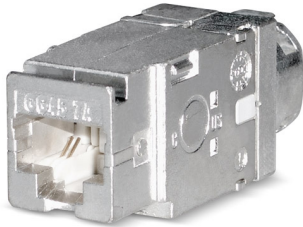
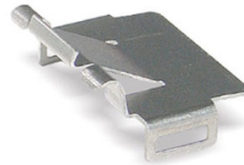


PS-GG45 7_A

Module, "Two-in-One" connector, shielded, Category 7_A
backward compatible to RJ45



Module PS-GG45 7A 1000 MHz shielded



Keystone clip

Description

The PS-GG45 7A module is a shielded module, compatible with RJ45 and specified up to 1000 MHz.

It was developed especially for applications beyond 10-gigabit Ethernet with highest bandwidths.

When used together with Cat. 7A data cables and patch cords, it enables to fulfil all Class FA requirements for the 4-connector Channel in accordance with ISO/IEC 11801 Amendment 1:2008.

The "Two-in-One" module has 12 contacts that work in two different transmission modes: Standard = RJ45 and High-Speed = GG45.

Useable for Power over Ethernet Plus (PoE+) corresponding to IEEE 802.3at. Robust zinc die casting housing with Keystone clip for easy installation in patch panels and faceplates with Keystone openings.

Quick and reliable wire-connections with the termination tool for GG45.

Depending on the plug that is used (RJ45 or GG45) there are 8 out of 12 contacts enabled:

- the RJ45 plug uses the 8 contacts on the top-level,
- the GG45 plug enables the 8 contacts in the upper and lower corners.

The 360° braid connection supplies best Coupling Attenuation values and provides for immunity against Alien Crosstalk or other external influences.

Electrical properties

EMC	shielded
-----	----------

Mechanical properties

Connection type	IDC insulation displacement connectors
Solid copper wire	0.51 (AWG 24) - 0.65 (AWG 22)
Stranded copper wire	AWG24 - AWG28

Standards

Cat./Class	Cat.7 _A / Class F _A
Connector standards	IEC 60603-7-71
Cabling standards	ISO/IEC 11801, EN 50173-1

Note

GG45TM is a registered trademark of Nexans.

Versions

Material number	Product	Colour	Weight [kg]	Packing unit
400102	Module PS-GG45 7 _A 4P Two-in-One shielded	silver	0.02 kg	10 pcs.
400103	Module PS-GG45 7 _A 4P Two-in-One shielded, for stranded wires	silver	0.04 kg	10 pcs.

