



ORDERING INFORMATION

PART NUMBER MATRIX

O C F H C
 1 2 3 4 5 6 7 8 9 10 11 12 13 14 15

15 Grade Level Box Option

N = NONE

A = 24x36x42 Grade Level Box with split green plastic bolt down cover

B = 24x36x42 Grade Level Box with split beige plastic bolt down cover

C = 24x36x42 Grade Level Box with split green plastic cover with L-bolt

D = 24x36x42 Grade Level Box with split beige plastic cover with L-bolt

E = 24x36x42 BULK Grade Level Box with split SHIELD bolt down cover

F = 24x36x42 BULK Grade Level Box with split SHIELD cover with L-bolt

G = 30x48x36 Grade Level Box with split green plastic bolt down cover

H = 30x48x36 Grade Level Box with split beige plastic bolt down cover

J = 30x48x36 Grade Level Box with split green plastic cover with L-bolt

K = 30x48x36 Grade Level Box with split beige plastic cover with L-bolt

L = 30x48x36 BULK Grade Level Box with split SHIELD bolt down cover

M = 36x76x42 BULK Grade Level Box with split SHIELD bolt down cover



CHANNELL

Where The Industry Connects.

UNITED STATES: Channell Commercial Corporation, Temecula, CA, United States • Tel 800.423.1863 • Fax 951.296.2322

CANADA: Channell Canada, Inc., Mississauga, ON, Canada • Tel 905.565.1700 • Fax 905.565.8282

EUROPE, MIDDLE EAST, AFRICA: Channell Ltd., Dartford, United Kingdom • Tel 44.1322.312590 • Fax 44.1322.508490

AUSTRALIA, ASIA, PACIFIC RIM: Channell Pty. Ltd., Seven Hills, NSW, Australia • Tel 61.2.8884.4111 • Fax 61.2.8814.8841

DEVELOPING LOCATIONS: Dallas, TX, United States • Mexico City, D.F., Mexico

WORLDWIDE HEADQUARTERS: Channell Commercial Corporation • Tel 951.719.2600 • 26040 Ynez Road, P.O. Box 9022, Temecula, CA 92589-9022, United States

www.channell.com

All specifications subject to change without notice. Printed in U.S.A.

© 2016 Channell Commercial Corporation. All rights reserved.

FIBER HUB SERIES



Fiber Hub Cabinet: Cross Connect Vault/Pad Mount

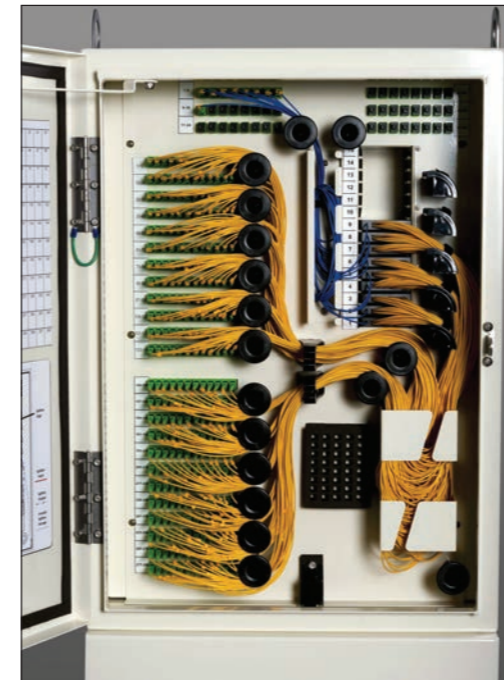
Data Sheet

DESCRIPTION

The Vault/Pad mounted Optimus Cabinet Fiber Hub is a powder coated aluminum cabinet designed for centralized split points in a PON network. The cabinet has a 12 inch skirt and is designed to fit onto BULK 24x36x36, 30x48x36, 36x76x42 vaults; or can be pad mounted. The 72, 96, 144, 288, 432 and 576 fiber termination choices allow operators to scale the vault mounted cabinet cost to their network design.

KEY FEATURES & BENEFIT

- Fiber Bend Radius Protection provides timeless performance.
- Intuitive fiber routing provides ease of use and repeatable splitter installation.
- Easy connector access allows easy cleaning access and quick reliable connections.
- Diverse splitter, WDM/Splitter, and CWDM module choice allow deployment in all GPON, EPON, and RFOG deployments as well in both centralized split and decentralized split network configurations.
- Splitter module fits all styles of Fiber Hub enclosures; which minimizes inventory and guarantees that the technician has the right modules to complete the work order.
- Splitter Modules include 1X32, 2x32, 1X16, 2X16, Dual 1X16, 1X8, Quad 1X8, 1X4, Sextuple 1X4, 1X2, and many versions of CWDM and DWDM multiplexer modules.
- Splitter Modules exceed GR-1209 and GR-1221 optical requirements and connect with GR-326 connectors delivering superb optical performance.
- Cabinets are Pole, Wall, and H-Frame mountable giving them placement flexibility
- Cabinets are manufactured with corrosion resistant 5052 H32 high strength aluminum with welded seams and a powder coated finish will deliver decades of cabinet life.
- Powder coated, welded and gasketed Cabinets deliver NEMA 4 water tight and dust tight performance



Optimus 288 Cross Connect Fiber Hub Cabinet mounted on top of a 24x36x36 BULK vault with SHIELD cover



Dedicated to protecting fiber optics through design, innovation, and service.



PRODUCT SPECIFICATIONS

PRODUCT SPECIFICATIONS

Distribution Counts	Cabinet Dimensions	Recommended Feed Count	Splitter Module Capacity	Recommended Cable Stub length	BULK Grade Level Box Options
72,96,144	15"wx28"hx14"d	24 Fiber (12 and 36 optional)	8	50'	24x36x36 30x48x42 36x76x42
288	20"wx28"hx14"d	24 Fiber (36 and 48 optional)	15	50'	24x36x36 30x48x42 36x76x42
432,576	25"wx32"hx15"d	48 Fiber (24, 36, 72 optional)	18	50'	30x48x42 36x76x42

* Without 12" Skirt Height

PRODUCT SPOTLIGHT

OPTIMUS 288 CABINET FIBER HUB, VAULT/PAD MOUNT PART #: OCFH288CABAAAD2AN

Overview

- OCFH288CABAAAD2AN has a 24 fiber feed and 288 fiber distribution field and includes all dielectric loose tube fiber stubs (50' long) and a single 1x32 splitter module
- The cabinet has a 12 inch skirt and is designed to fit onto BULK 24x36x36, 30x48x36, 36x76x42 vaults or can be pad mounted
- All connectors are SC/APC and the splitter modules have input and output leads on them to allow a cross-connection between the fiber input and any subscriber output through the splitter for an "on demand" deployment plan
- Additional feed inputs can be used with fiber jumpers to bypass splitters for secure circuits with un-split signals
- Splitters are available in 32, 16, 8 and 4 way splits and one splitter module design fits every Fiber Hub designed (Cabinet, Sealed Closure or Pole Mount Cabinet designs)



ORDERING INFORMATION

PART NUMBER MATRIX

O C F H C
1 2 3 4 5 6 7 8 9 10 11 12 13 14 15

- O = OPTIMUS**
- C = CABINET**
- F = FIBER**
- H = HUB**
- DISTRIBUTION FIBER COUNT**
072
096
144
288
432
576
- C = CROSS CONNECT**
- CONNECTOR TYPE**
A = SC/APC
B = LC/APC
U = SC/UPC
- FEED COUNT**
A = 12
B = 24
C = 36
D = 48 (288, 432 and 576 only)
E = 72 (432 and 576 only)
- SPLITTER INCLUDED**
N = NONE
A = one 1x32
B = Two 1x32
C = Three 1x32
D = Four 1x32
E = Five 1x32
- SKIRT INCLUDED**
N = NONE
A = 12 inch
- STUB LENGTH**
A = 50 ft
B = 100 ft
C = 200 ft
- CABLE TYPE**
A = Armored Loose Tube
D = Dielectric Loose Tube
X = Armored Ribbon
R = Dielectric Ribbon
- Cabinet Color**
1 = C1 Light green
2 = C2 Beige
3 = C3 Dark Green
- Handle/Hasp Options**
A = Hex Head Entry And Padlock Hasp
B = Hex Head Entry

