

FOPTRONICS

Test and Measurement Catalogue



Optronics

An industry leader in enterprise connectivity

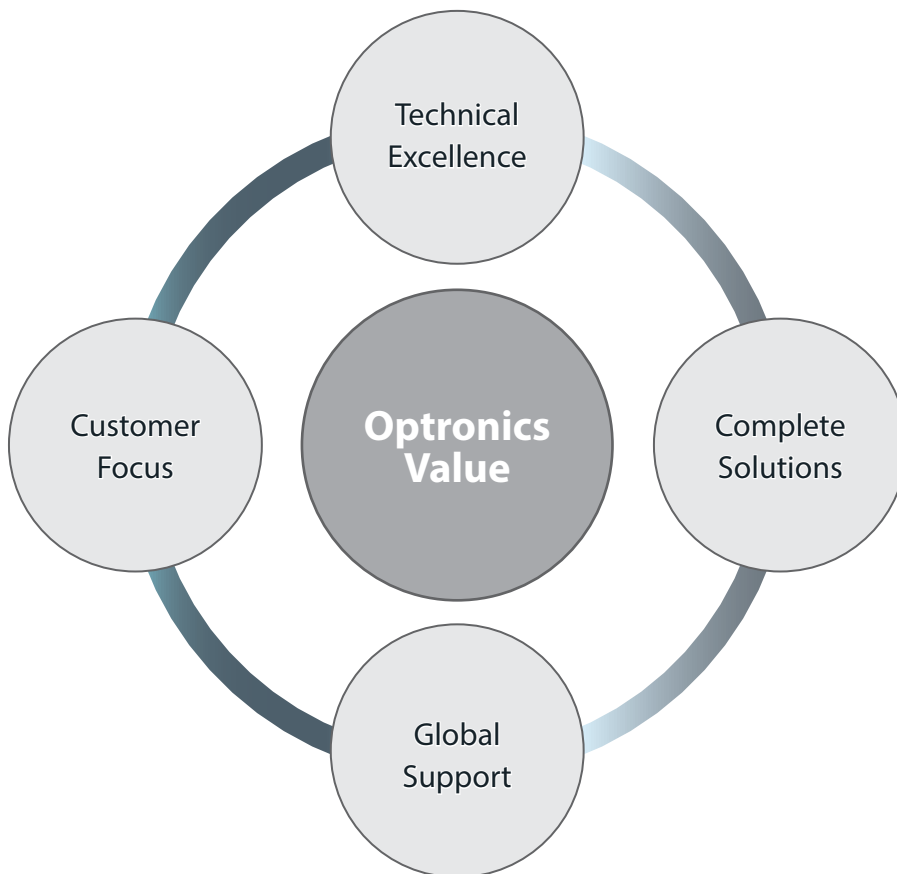
About Us

Optronics products provide a comprehensive range of premium end-to-end fibre optic connectivity and copper structured cabling solutions.

Optronics products are designed, manufactured and supported by a team of industry leaders dedicated to creating the highest quality products that exceed industry standards and are assured to give years of reliable service.

All products are manufactured in ISO 9001:2008 certified facilities.

International standards are the basis for Optronics products, ensuring compatibility in all networks. Solutions constructed with Optronics products according to design, installation and testing standards will give years of reliable service. We stand behind our products with full product and system warranties.



Contents

	Page
Overview	4-5
M310 Enterprise OTDR	6-7
M210 Multifunction Micro OTDR	8-9
OLS Series Light Sources	10
OPM5 Optical Power Meter	11
FiberTech FT-PM3 Optical Power Meter	12
FiberTech FT-LS20 Dual Laser Optical Light Source	13
CSS1-MM LED Source	14
MT Tracer	15
OTDR Launch Leads	16
DFS1 Digital FiberScope	17
TRM® 2.0 Test Results Manager	18
Optical Light Test Sets	19
OTDR Kits	20
Ultimate Optical Light Test Sets	21
Adaptors and Tips	22
OTDR Launch Leads	23
Test Reference Leads	24
Cleaning	25

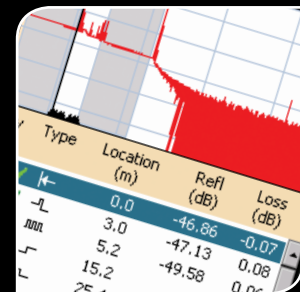
General Information

It is the customer's responsibility to check whether the components illustrated in this catalogue comply with different regulations from those stated in special fields of application we are unable to foresee.

We reserve the right to modify designs in order to improve quality, keep pace with technological advancement or meet particular requirements in production.





No part of this catalogue may be reproduced in any form (print, photocopy, microfilm or any other process) or processed, duplicated or distributed by means of electronic systems without the written permission of Optronics Limited. We are bound by the English version available via our company website.

© Optronics Limited. All rights reserved, including those of any translations.



OPTRONICS | PRODUCT COMPARISON

Model	Page	Included Adaptors	OTDR Performance			Integrated Peripherals			Insp. Probe
			Wavelengths (nm)	Dynamic Range (dB)	Deadzone EDZ/ADZ (m)	OLS	OPM	VFL	
 OP-M310-25U-01	6-7	SC (for OTDR and OPM), FC and ST(OTDR only) and 1.25mm and 2.5mm (OPM only)	850 / 1300 1310 / 1550	30 / 30 38 / 37	0.8/2.5	●	✓	✓	DFS1
 OP-M210-25U-01	8-9	SC (for OTDR and OPM), FC and ST(OTDR only) and 2.5mm (OPM only)	850 / 1300 1310 / 1550	26 / 26 30 / 30	1.5 / 9	●	✓	✓	DFS1
 OP-OLS4-10-0900PR	10	SC	850 / 1300	●	●	✓	●	●	●
 OP-OPM5-32-0902PR	11	SC	850 / 1300 1310 / 1490 1550	76	●	●	✓	●	●
 OP-FT-PM3	12	SC, FC and ST	850 / 1300 1310 / 1490 1550 / 1625	76	●	●	✓	●	●
 OP-FTLS-20	13	SC, FC and ST	1310 / 1550	●	●	✓	●	●	●
 OP-CSS1-MM	14	SC	850 / 1300	●	●	✓	●	●	●
 OP-TR CR-90-0900	15	●	650	●	●	●	●	✓	●

Fast Facts	Model	
<ul style="list-style-type: none"> 1. Integrated Optical Power Meter and Visual Fault Locator 2. Short Dead Zones provide testing of closely spaced events 3. Industry Leading Auto Event analysis ensures no missed and false events 	 <p>OP-M310-25U-01</p>	
<ul style="list-style-type: none"> 1. Integrated OPM and VFL standard 2. 30 dB dynamic range single-mode 3. Touch and Test® intuitive user interface 	<p>OP-M210-25U-01</p>	
<ul style="list-style-type: none"> 1. Rugged, dependable tools 2. Stabilized outputs for accurate loss measurements 3. Wave ID supports testing of two wavelengths simultaneously when used with the OP-M310, OP-M210 or the OP-OPM5 	<p>OP-OLS4-10-0900PR</p>	
<ul style="list-style-type: none"> 1. Rugged, dependable long-life tool 2. Single-mode and multimode applications 3. Wave ID supports testing up to three wavelengths simultaneously 	<p>OP-OPM5-32-0902PR</p>	
<ul style="list-style-type: none"> 1. Palm-sized, rugged, lightweight 2. Large LCD with back light 3. Power measurements in dBm or μW 	<p>OP-FT-PM3</p>	
<ul style="list-style-type: none"> 1. Large LCD with back light 2. 270, 330, 1000, 2000 Hz tone capability 3. Long battery life with 2 x AA alkaline 	<p>OP-FTLS-20</p>	
<ul style="list-style-type: none"> 1. Palm-sized rugged, dependable 2. Cost-effective, easy to use 3. Auto-off time out feature to maximize battery life 	<p>OP-CSS1-MM</p>	
<ul style="list-style-type: none"> 1. Direct connect - No fan-outs necessary 2. Test 8 and 12 fibre MTP® assemblies 3. Test polarity, continuity and fibre mismatch 	<p>OP-TR CR-90-0900</p>	

M310 Enterprise OTDR



Enterprise networks have evolved in ways that create more demanding testing of optical cables. This requires an OTDR that can accurately locate and measure closely spaced events on high speed networks. The M310 has the short dead zones required to test these networks. The large number of cable runs in modern enterprise networks and data centers, requires automated detection and measurement of all events in each cable. The M310 provides accurate and reliable event analysis for these critical networks. The M310's Enhanced Event Analysis software is a product of extensive research into the properties of fibre optic cable events and provides a new level of accuracy and reliability in field test equipment.

The M310 OTDR operates at 850nm and 1300nm multimode and 1310nm and 1550nm single mode and is optimized for testing, analyzing and troubleshooting enterprise, data center, LAN/WAN, campus and military fibre networks.

Rugged, lightweight and easy to hold, the M310 has a Touch and Test user interface that makes it easy for experts and novices to test and document fibre networks accurately and quickly. With an integrated, Optical Power Meter and Visual Fault Locator the M310 provides complete Tier 1 insertion loss and Tier 2 OTDR testing. Using pre-set Industry ISO and TIA standards or user set Pass/Fail thresholds, technicians are alerted to installation problems and failures. The M310 can be ordered with an Advanced Analysis software option that includes Macro/Microbend detection and Bi-directional trace analysis.

End face inspection can be performed using the optional DFS1 Digital Fibre Scope. OTDR traces, OPM measurements and fibre endface images can be saved together in a job and downloaded to a computer for analyzing and editing using the included Test Results Manager, TRM® 2.0 application software.

The M310 is supplied with a rechargeable battery, AC Adaptor, power leads, mandrels, USB data cable, SC adaptors (for OTDR and OPM), FC and ST adaptors (OTDR only), 1.25mm and 2.5mm adaptors (OPM only), strap, stylus and USB pen drive, plus Quick reference and installation guides.

Industry Leading
TruEvent™
Technology

Included Adaptors



For further adaptor options see page 22

Key Facts

- > Integrated Optical Power Meter and Visual Fault Locator
- > Short dead zones provide testing of closely spaced events
- > Industry Lead Auto Event analysis ensures no missed and false events
- > Front Panel and First Connector Check
- > Live fibre detection prevents damage to network equipment
- > Inspection capable with DFS1 Digital Fibre Scope
- > 16-hour battery life
- > Multiple languages supported
- > 38dB single mode dynamic range.
- > Wave ID supports testing two wavelengths simultaneously"
- > Inspection capable with DFS1 Digital Fibre Scope (see page 17)

Screen Shots

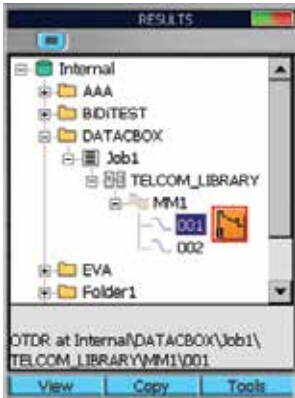


Image 1. File Manager



Image 2. FPFC Results



Image 3. Front Panel, Bad



Image 4. Results



Image 5. Results



Image 6. Results



Image 7. Live Fibre

Applications

- > Test, troubleshoot and document networks with closely spaced events
- > Tier 1 and Tier 2 testing and certification of SM and MM networks
- > Document and create standards compliant acceptance reports with TRM™ 2.0, companion PC software
- > Inspection of fibre endfaces using DFS1 Digital Fibre Scope
- > Languages supported - English, French, German, Italian, Polish, Spanish, Portuguese, Turkish
- > For DFS1 Digital Fibre Scope see page 17

Ordering Information

DESCRIPTION	PART NUMBER
Optronics M310 QUAD OTDR, 850/1300/1310/1550 nm, OPM, VFL	OP-M310-25U-01



For OTDR, Light Source and Power Meter Kits see page 20-21

M210 Multifunction OTDR



The M210 and M310 are the only inspection ready QUAD OTDRs that combine OTDR, OPM and VFL capability with a proven, easy-to-use and easy-to-learn user interface. The M210 offers the intuitive Touch and Test user interface in a rugged, lightweight, easy-to-hold package ready for field use. The M210 features a powerful processing engine, a high resolution display and, for the first time in an OTDR of its size, an integrated Optical Power Meter.

Touch and Test simplifies the M210 user experience, minimizes human errors and reduces training time by providing one-touch access to the Full-Auto, Expert and Real-Time OTDR test modes, OPM measurement mode as well as the Results Management and Job Creation menus. The M210 allows setting Pass/Fail thresholds to industry standard TIA, ISO or user-values and will automatically alert users of failing fibres. Touch and Test enables both experts and novices alike to complete jobs more accurately and in less time.

Document and create standards compliant acceptance reports with TRM™ 2.0, companion PC software.

The M210 is supplied with a rechargeable battery, AC Adaptor, power leads, mandrels, USB data cable, SC adaptors (for OTDR and OPM), FC and ST adaptors (OTDR only), 2.5mm adaptor (OPM only), strap, stylus and USB pen drive, plus Quick reference and installation guides.

Key Facts

- > Integrated OPM and VFL standard
- > 30 dB dynamic range single-mode
- > Touch and Test® intuitive user interface
- > Rugged, hand-held, lightweight (<1 kg)
- > 16-hour battery life
- > Wave ID supports testing two wavelengths simultaneously
- > Inspection capable with DFS1 Digital Fibre Scope (see page 17)

Included Adaptors



For further adaptor options see page 22

Screen Shots



Image 1. File Manager



Image 2. FPFC Results



Image 4. Results



Image 5. Power Meter



Image 6. End Face Geometry

Applications

- > Testing and Troubleshooting multimode and single-mode fibre networks
- > Tier 1 and Tier 2 testing and certification of SM and MM networks
- > Languages supported: English, French, German, Italian, Polish, Spanish, Portuguese, Turkish, and Chinese (Simplified, Traditional)

Ordering Information

DESCRIPTION	PART NUMBER
Optronics M210 QUAD OTDR, 850/1300/1310/1550 nm, OPM, VFL	OP-M210-25U-01



For OTDR, Light Source and Power Meter Kits see page 20-21

OLS Series Light Sources

5 Year Product Warranty



Included Adaptor



SC

For further adaptor options see page 22
For test leads see page 24

For Light Source and
Power Meter Kits
see page 19



SM/MM quad wavelength precision light source optimised for use with OPM5 Power Meter and M310 and M210 OTDRs

Designed for use in outside plant environments



- > Splash resistant controls
- > Withstands one-meter drop test
- > Controls designed for easy operation with gloves
- > Field swappable output Adaptors allow access for cleaning optical port and supports multiple connector styles
- > Efficient design provides long test time from globally available AA batteries. External power Adaptor available for extended testing or lab situations.
- > Supplied with 2 x AA batteries, Mandrels, SC Adaptor, CD and Quick reference Guides.

Output Modes Supported

- > Wave ID (Dual or Single) decreases test time while reducing technician errors
- > CW mode provides continuous output (no encoding)
- > Test Tone (2000, 1000, 330, 270 Hz) for use in fibre identification with power meters (with fibre end access) or Optical Fiber Identifier (OFI) products for non-intrusive, mid-span testing

Applications

- > Link loss measurements
- > Certify SM and MM links to industry standards
- > Continuity check and fibre identification for maintenance restoration

Key Facts

- > Rugged, dependable tools
- > Simple user interface minimizes training requirements
- > Stabilized outputs for accurate loss measurements
- > Wave ID supports testing two wavelengths simultaneously
- > Field swappable output Adaptors provide flexibility

Ordering Information

DESCRIPTION	PART NUMBER
Optronics OLS4 SC/SC, LED Source 850/1300nm & Laser Source 1310/1550nm	OP-OLS4-10-0900PR

OPM5 Optical Power Meter

5 Year Product Warranty



Included Adaptor



SC

For further adaptor options see page 22
For test leads see page 24

For Light Source and
Power Meter Kits
see page 19



Ordering Information

DESCRIPTION	PART NUMBER
Optronics OPM5-2D SC, Optical Power Meter (850/1300/1310/1490/1550)	OP-OPM5-32-0902PR

Data capture and reporting. File Management system allows technicians to organize test results into multiple files and transfer stored results via USB to a PC for analyzing, generating reports and printing.



The supplied powerful PC Analysis and Reporting Tool (TRM® 2.0) allows users to apply industry-standards-based rules to test results and create comprehensive certification reports. Users can generate network Pass/Fail results demonstrating compliance to industry standards and illustrate headroom.

- > Splash resistant controls
- > Withstands one-meter drop test
- > Controls designed for easy operation with gloves
- > Field swappable optical Adaptors allow access for cleaning optical port and supports multiple connector styles
- > Efficient design provides long test time from globally available AA batteries
- > Supplied with 2 x AA batteries, Mandrels, SC Adaptor, CD and Quick reference Guides.

Applications

- > General enterprise premises LAN/WAN multimode and single-mode networks
- > Data centre networks
- > Passive Optical Networks (PON) testing
- > Data capture for report generation using included TRM2.0 PC software
- > Designed for use in outside plant environments

Key Facts

- > Rugged, dependable long-life tool
- > Single-mode and multimode applications
- > Wave ID supports testing up to three wavelengths simultaneously
- > Field swappable connector adaptors provide flexibility
- > Large display visible in direct sunlight. Back light for dim conditions
- > Stores optical reference at each calibrated wavelength
- > Detection of multiple test tones for fibre identification
- > Equipped with five-minute auto-off feature
- > Long battery life from globally available 2 x AA (Mignon) batteries
- > Fully N.I.S.T. traceable

FiberTech FT-PM3 Power Meter



Included Adaptors



For further adaptor options see page 22
For test leads see page 24

Screenshots

Wavelengths

- 850 nm → -6.83 dBm
- 1300 nm → 1310 nm
- 1310 nm → CW
- 1490 nm → 0.00 dB
- 1150 nm → 1310 nm
- 1625 nm → CW

Display Loss in dB or dBm

The FiberTech FT-PM3 is a basic Optical Power Meter designed for use in performing insertion loss measurements in single-mode and multimode optical networks. The FT-PM3 is a general-purpose meter with an input range of +6 dBm to -50 dBm and is calibrated at 850, 1300, 1310, 1490, 1550 and 1625 nm. Models can detect CW and 270, 330, 1000 or 2000 Hz tones.



FC, SC and ST connector adaptors are included and the unit is supplied with 2 x AA batteries and a Quick Reference Guide.

FiberTech Optical Power Meters are designed for ease of use. Each is equipped with a large, easy-to-read LCD, which shows the input power level, the remaining battery capacity, and the status of the automatic power-off function. A user-selectable Back light enables the FT-PM3 to be used in dimly-lit spaces.

FiberTech Optical Power Meters will operate for approximately 300 hours from a pair of ordinary AA alkaline batteries. An automatic power-down circuit optimizes battery life by shutting off after 5 minutes of operation.

When paired with a Optical Light Source (such as the FiberTech FT-LS20, CSS1-MM, or OLS4), FiberTech Optical Power Meters provide installers, technicians, and field engineers with accurate, stable measurements of optical power levels and insertion loss characteristics. In addition, the tone detection capabilities also support optical fibre identification tasks when used with an appropriate light source. The FT-PM3 is fully N.I.S.T. traceable and complies with CE and ROHS requirements.

Applications

- > Single-mode and multimode optical networks
- > Telco, broadband and enterprise networks
- > Optical insertion loss measurements
- > Optical fibre identification tasks



Key Facts

- > Palm-sized, rugged, lightweight
- > Large LCD with back light
- > Power measurements in dBm or μW
- > Insertion loss measurements in dB
- > 270, 330, 1000, 2000 Hz tone detection
- > Long battery life with 2 x AA alkaline
- > Battery gauge and automatic power-off function
- > N.I.S.T traceable, CE and RoHS compliant

Ordering Information

DESCRIPTION	PART NUMBER
Basic Loss test Kit	OP-FT-PM3

FiberTec Optical Light Source

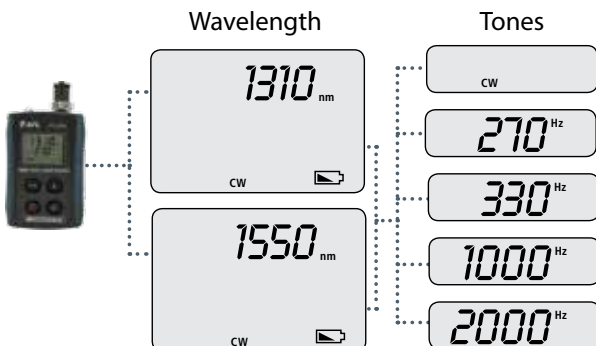


Included Adaptors



For further adaptor options see page 22
For test leads see page 24

Screenshots



The FT-LS20 is a basic single port, dual laser Optical Light Source for use in performing insertion loss measurements and fibre identification tasks on singlemode optical networks. The FT-LS20 features 1310 nm and 1550 nm laser outputs from a single output port. Each wavelength may be transmitted at CW or with a 270, 330, 1000 or 2000 Hz tone. The output port of the FT-LS20 features a removable SC Adaptor plus FC, and ST connector adaptors are included and is supplied with 2 x AA batteries and a Quick Reference Guide.



The FT-LS20 is designed for ease of use. It features a large, easy-to-read LCD, which shows the output wavelength and any selected tone. The FT-LS20 also displays the remaining battery capacity and the status of the automatic power-off function. A user selectable back light enables the FT-LS20 to be used in dimly-lit spaces. The FT-LS20 will operate for approximately 30 hours from a pair of ordinary AA alkaline batteries. An automatic power-down circuit optimizes battery life by shutting off after 5 minutes of operation.

When paired with a Optical Power Meter (such as the FiberTech FT-PM3), the FT-LS20 provides installers, technicians, and field engineers with an accurate, stable source of 1310 nm and 1550 nm optical signal for insertion loss measurements. When paired with a Optical Fibre Identifier the FT-LS20 provides users with a source of continuous and tone modulated signals that enable individual fibres to be definitively identified. The FT-LS20 is fully N.I.S.T. traceable and complies with CE and RoHS requirements.

Applications

- > Single-mode and multimode optical networks
- > Telco, broadband and enterprise networks
- > Optical insertion loss measurements
- > Optical fibre identification tasks



Key Facts

- > Large LCD with back light
- > 270, 330, 1000, 2000 Hz tone capability
- > Long battery life with 2 x AA alkaline
- > Palm-sized, rugged, lightweight
- > Battery gauge and automatic power-off function
- > N.I.S.T traceable, CE and RoHS compliant

Ordering Information

DESCRIPTION	PART NUMBER
Optronics FTLS-20 SC, ST, FC, Laser Source (1310/1550nm)	OP-FTLS-20

CSS1-MM LED Source

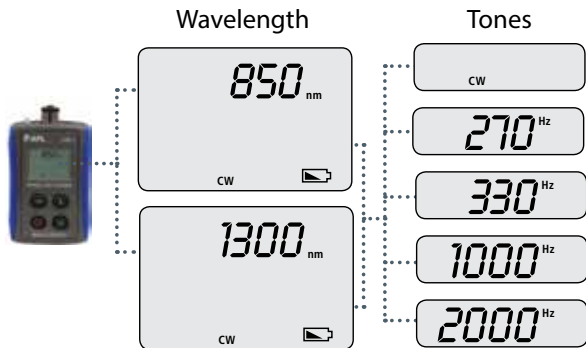


Included Adaptor



For test leads see page 22

Screenshots



The CSS1 is a basic single port, dual LED Optical Light Source for use in performing insertion loss measurements and fibre identification tasks on multimode optical networks. The CSS1 features 850 nm and 1300 nm LED outputs from a single output port. Each wavelength may be transmitted at CW or with a 270, 330, 1000 or 2000 Hz tone. The output port of the CSS1 features a fixed SC Adaptor.



A rugged test instruments designed with an intuitive, simple user interface allowing technicians to focus on installing and maintaining fibre networks. Multimode light source for measuring network insertion loss, continuity checks, and fibre identification.

- > 850 nm and 1300 nm LED output from single test port
- > 50 µm and 62.5 µm mandrels included
- > Supplied with 2 x AA batteries, Mandrels, SC Adaptor and Quick reference Guides.
- > For a variety of SC test leads see page 24

Key Facts

- > Palm-sized rugged, dependable tools
- > Cost-effective, easy to use
- > Auto-off time out feature to maximize battery life
- > Large sunlight readable display. Back light for dim conditions

Ordering Information

DESCRIPTION	PART NUMBER
Optronics CSS1-MM SC, LED Source (850/1300nm) with SC adaptor	OP-CSS1-MM



For Light Source and Power Meter Kits see page 19

MT Tracer

The MT Tracer is a compact multi-fibre visual fault identifier (red laser source) supporting 8 or 12 fibre MTP® connections. The user simply connects the 12-fibre cable directly to the unit. Fibres can be tested individually or all at once. By progressing sequentially through the fibres, cables can be quickly checked for polarity by verifying the proper order at the output.

The MT Tracer Display is a passive optical device designed to receive the light from the MT Tracer Source and provide an eye-safe method of viewing the red light.

Identification is accomplished by expanding the output of the MT ferrule to a large easy to read panel - large enough to be read from several feet away.



Applications

- > Data Centre - MPO Cable Verification
- > Test polarity, continuity, and fibre mismatch
- > Locate ends of unmarked cables in data centres

Key Facts

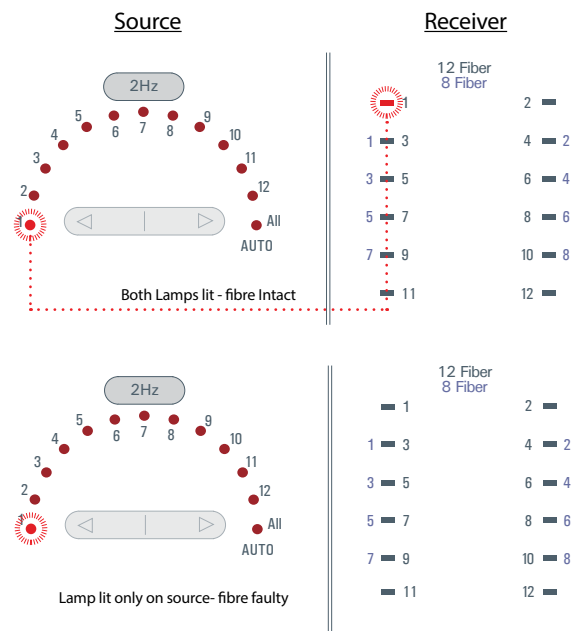
- > Viewing safe for eyes
- > CW or 2 Hz output
- > Direct connect - No fan-outs necessary
- > Test 8 and 12 fibre MTP® assemblies
- > Test polarity, continuity and fibre mismatch

Ordering Information

DESCRIPTION	PART NUMBER
Optronics MT-Tracer w/Source and Display	OP-TRCR-90-0900

*for a wide range of Test Lead options see page 24

Operation



FOCIS WiFi



FOCIS WiFi combines the proven fibre connector inspection and analysis capabilities of our award-winning FOCIS and FOCIS PRO systems with the familiar, powerful and easy-to-use capabilities of a smart-phone or tablet. No matter where your work takes you FOCIS WiFi is as mobile, agile and connected as you are.

FOCIS MOBILE is a free companion application that users download from Google Play or the App Store to a smart phone or tablet. This application enables users to connect to and control the FOCIS WiFi system, to define system settings and user preferences and to use the smart phone or tablet to view, store and share images and test results as permitted by the system purchased.

Three different FOCIS WiFi systems are available.

- > FOCIS WiFi VIEW - enables users to view live images of a fibre end-face on their smart phone or tablet
- > FOCIS WiFi PLUS - enables users to view, save, recall and share saved end-face images via email, text or mobile cloud applications like Dropbox™ or Google Drive™
- > FOCIS WiFi PRO - enables users to automatically analyse connector integrity according to IEC 61300-3-35, AT&T TP-76461 or user defined standards and save, recall and share results via email, text or mobile cloud applications



Ordering Information

DESCRIPTION	PART NUMBER
FOCIS WiFi PRO Kit. Includes DFS1 Digital FibreScope, Portable Application Link (PAL) with FOCIS WiFi PRO firmware, AC Adaptor, FOCIS WiFi holster, soft carry case, Adaptor tip box.*	FMPR-00-04XN

*for adaptor tips see page 22

DFS1 Digital FiberScope



The DFS1 Digital FiberScope supports magnified video inspection of optical fibre connector end-faces during fibre optic cable and connector installation and maintenance. The DFS1 can connect via a USB port to the M210 and M310 OTDRs to display and archive inspection images. An extensive array of Adaptor tips is available to support inspection of all commonly

used fibre optic connectors. The DFS1 includes Universal 1.25mm male PC, Universal 2.5mm male PC, SC and FC Female bulkhead, LC female Bulkhead adaptor tips plus a software update for the M-Series OTDRs. Fibre end-faces may also be viewed on a PC (using AFL SimpleView software) by connecting the DFS1 to the PC's USB port.

Ordering Information

DESCRIPTION	PART NUMBER
DFS1 Digital FiberScope PC/UPC Inspection kit includes: (1) DFS1-00-04X0MR DFS1 USB Digital FiberScope (1) DFS1-00-0001MR Universal 1.25 mm male PC Adaptor tip (1) DFS1-00-0002MR Universal 2.5 mm male PC Adaptor tip (1) DFS1-00-0003MR SC and FC female bulkhead Adaptor tip (1) DFS1-00-0004MR LC female bulkhead Adaptor tip (1) DFS1-04-0001MZ soft carry case for scope and Adaptors (1) 8500-05-0001MZ One-Click Cleaner SC, ST, FC (1) 8500-05-0002MZ One-Click Cleaner LC/MU (1) 1400-01-0093MZ 6-compartment Adaptor tip storage box (1) Digital FiberScope display software update for M210, M310*	OP-DFS-00-04XU

*for further adaptor tip options see page 22

TRM® 2.0 Test Results Manager



The TRM 2.0 User Interface is available in English, French, German, Italian, Polish, Portuguese, Spanish, Turkish, Japanese, Simplified Chinese, and Traditional Chinese.

TRM 2.0 Test Results Manager is Windows-compatible PC software, which provides comprehensive OTDR trace, connector inspection, and optical loss test results analysis and reporting. Designed for use with NOYES test and inspection products, TRM 2.0 is available in Basic and Advanced versions.

TRM 2.0 Basic Software permits technical personnel to quickly view results, generate acceptance reports, analyze OTDR traces, loss or certification results or batch edit OTDR traces. TRM 2.0 Basic Software also supports industry standard Telcordia (GR-196 v1.1, SR-4731 issue 1 & 2) .SOR formats and permits fibre inspection images from the NOYES FOCIS inspection system to be included in test reports through the FOCIS2Go utility. TRM 2.0 Advanced version adds automatic Macro/Microbend detection, Bi-directional trace averaging and export to .CSV.

TRM 2.0 Basic software is included with OTDRs and OPM5 (five fulfillments included at no additional charge). Users may download TRM 2.0 full working version (Basic plus Advanced features) and try it for 30 days. Once the evaluation period ends, users will need to acquire TRM 2.0 Basic or TRM 2.0 Advanced software package to continue to use TRM.

The TRM 2.0 Basic and Advanced software part numbers are listed below.



Main Menu - User can choose what functionality they want to use.



Test Report wizard - User can choose which data they want to create a report with.



Insert customer information for tailored reports.



OTDR Trace Viewer



Customisable Reports

Ordering Information

DESCRIPTION	PART NUMBER
TRM 2.0 Basic software (OTDR Trace/OLTS Viewer, Batch Editor and Reports)	OP-TRM-00-0900PR
TRM 2.0 Basic software (OTDR Trace/OLTS Viewer, Batch Editor and Reports) delivered by email	OP-TRM-01-0900PR
TRM 2.0 Advanced software (TRM 2.0 Basic plus Advanced Analysis)	OP-TRM-00-0910PR
TRM 2.0 Advanced software (TRM 2.0 Basic plus Advanced Analysis) delivered by email	OP-TRM-01-0910PR
TRM 2.0 upgrade from Basic to Advanced software	OP-TRM-00-0920PR
TRM 2.0 upgrade from Basic to Advanced software delivered by email	OP-TRM-01-0920PR

Advanced Optical Light Test Set



ITEMS INCLUDED	PAGE	ITEM NUMBER	KIT NUMBER
OPM5 Optical Power Meter	14	OP-OPM5-32-0900PR	KIT1
OLS Series Light Sources	13	OP-OLS4-10-0900PR	

Note:

OPM5 is supplied with 2 x AA batteries, SC Adaptor, CD and Quick reference Guides.
 OLS4 is supplied with 2 x AA batteries, Mandrels, SC Adaptor, CD and Quick reference Guides.

Standard Optical Light Test Sets



ITEMS INCLUDED	PAGE	ITEM NUMBER	KIT NUMBER
CSS-1MM LED Source	12	OP-CSS1-MM	KIT2
FiberTech FT-PM3 Optical Power Meter	10	OP-FT-PM3	

Note:

CSS1 is supplied with 2 x AA batteries, SC Adaptor, Mandrels and Quick reference Guides.
 PM3 is supplied with 2 x AA batteries, SC, FC and ST Adaptors, and Quick reference Guides.



ITEMS INCLUDED	PAGE	ITEM NUMBER	KIT NUMBER
FiberTech FT-LS20 Dual laser Optical Light Source	11	OP-FTLS-20	KIT3
FiberTech FT-PM3 Optical Power Meter	10	OP-FT-PM3	

Note:

FT-LS20 is supplied with – 2 x AA batteries, SC, FC and ST Adaptors, and Quick reference Guides.
 PM3 is supplied with 2 x AA batteries, SC, FC and ST Adaptors, and Quick reference Guides.



ITEMS INCLUDED	PAGE	ITEM NUMBER	KIT NUMBER
CSS-1MM LED Source	12	OP-CSS1-MM	KIT4
FiberTech FT-LS20 Dual laser Optical Light Source	11	OP-FTLS-20	
FiberTech FT-PM3 Optical Power Meter	10	OP-FT-PM3	

Note:

CSS1 is supplied with 2 x AA batteries, SC Adaptor, Mandrels and Quick reference Guides.
 FT-LS20 is supplied with – 2 x AA batteries, SC, FC and ST Adaptors, and Quick reference Guides.
 PM3 is supplied with 2 x AA batteries, SC, FC and ST Adaptors, and Quick reference Guides.

OTDR Kits



ITEMS INCLUDED	PAGE	ITEM NUMBER	KIT NUMBER
M210 Enterprise OTDR	8	OP-M210-25U-01	KIT5
DFS1 Digital FiberScope and Inspection Kit	16	OP-DFS-00-04XU	

Note:

M210 is supplied with a rechargeable battery, AC Adaptor, power leads, mandrels, USB data cable, SC (for OTDR and OPM), FC and ST (OTDR only), 2.5mm (OPM only), strap, stylus and USB pen drive and Quick reference and installation guides.
 DFS1 is supplied with that Universal 1.25mm male PC, Universal 2.5mm male PC, SC and FC Female bulkhead, LC female Bulkhead Adaptors.



ITEMS INCLUDED	PAGE	ITEM NUMBER	KIT NUMBER
M210 Enterprise OTDR	8	OP-M210-25U-01	KIT6
DFS1 Digital FiberScope and Inspection Kit	16	OP-DFS-00-04XU	
OLS Series Light Source	13	OP-OLS4-100900PR	

Note:

M210 is supplied with a rechargeable battery, AC Adaptor, power leads, mandrels, USB data cable, SC (for OTDR and OPM), FC and ST (OTDR only), 2.5mm (OPM only), strap, stylus and USB pen drive and Quick reference and installation guides.
 DFS1 is supplied with that Universal 1.25mm male PC, Universal 2.5mm male PC, SC and FC Female bulkhead, LC female Bulkhead Adaptors.
 OLS4 is supplied with 2 x AA batteries, Mandrels, SC Adaptor, CD and Quick reference Guides.



ITEMS INCLUDED	PAGE	ITEM NUMBER	KIT NUMBER
M310 Enterprise OTDR	6	OP-M310-25U-01	KIT7
DFS1 Digital FiberScope and Inspection Kit	16	OP-DFS-00-04XU	

Note:

M310 is supplied with a rechargeable battery, AC Adaptor, power leads, mandrels, USB data cable, SC (for OTDR and OPM), FC and ST (OTDR only), 1.25mm and 2.5mm (OPM only), strap, stylus and USB pen drive and Quick reference and installation guides.
 DFS1 is supplied with that Universal 1.25mm male PC, Universal 2.5mm male PC, SC and FC Female bulkhead, LC female Bulkhead Adaptors.



ITEMS INCLUDED	PAGE	ITEM NUMBER	KIT NUMBER
M310 Enterprise OTDR	6	OP-M310-25U-01	KIT8
DFS1 Digital FiberScope and Inspection Kit	16	OP-DFS-00-04XU	
OLS Series Light Source	13	OP-OLS4-100900PR	

Note:

M310 is supplied with a rechargeable battery, AC Adaptor, power leads, mandrels, USB data cable, SC (for OTDR and OPM), FC and ST (OTDR only), 1.25mm and 2.5mm (OPM only), strap, stylus and USB pen drive and Quick reference and installation guides.
 DFS1 is supplied with that Universal 1.25mm male PC, Universal 2.5mm male PC, SC and FC Female bulkhead, LC female Bulkhead Adaptors.
 OLS4 is supplied with 2 x AA batteries, Mandrels, SC Adaptor, CD and Quick reference Guides.

Ultimate Optical Light Test Sets



ITEMS INCLUDED	PAGE	ITEM NUMBER	KIT NUMBER
M310 Enterprise OTDR	6	OP-M310-25U-01	KIT9
DFS1 Digital FiberScope and Inspection Kit	16	OP-DFS-00-04XU	
OLS Series Light Source	13	OP-OLS4-100900PR	
MT Tracer	9	OP-TRCR-90-0900	
Short extended tip for LC/PC bulkhead adaptor	-	OP-DFS1-00-0019MR	
MTP/PC and MTP/APC ferrule and bulkhead Adaptor extended tip kit; includes base plus MTP/PC and MTP/APC front end tips	-	OP-DFS1-00-0042MR	

Note:

M310 is supplied with a rechargeable battery, AC Adaptor, power leads, mandrels, USB data cable, SC (for OTDR and OPM), FC and ST (OTDR only), 1.25mm and 2.5mm (OPM only), strap, stylus and USB pen drive and Quick reference and installation guides.
 DFS1 is supplied with that Universal 1.25mm male PC, Universal 2.5mm male PC, SC and FC Female Bulkhead Adaptors, LC female Bulkhead Adaptors.
 OLS4 is supplied with 2 x AA batteries, Mandrels, SC Adaptor, CD and Quick reference Guides.
 For further Adaptor Tip Options see page 22



ITEMS INCLUDED	PAGE	ITEM NUMBER	KIT NUMBER
M310 Enterprise OTDR	6	OP-M310-25U-01	KIT10
DFS1 Digital FiberScope and Inspection Kit	16	OP-DFS-00-04XU	
OLS Series Light Source	13	OP-OLS4-100900PR	
MT Tracer	9	OP-TRCR-90-0900	
Short extended tip for LC/PC bulkhead adaptor	-	OP-DFS1-00-0019MR	
Multi-row MTP/PC ferrule and bulkhead Adaptor extended tip kit; Includes base plus multi-row MTP/PC front end tip	-	OP-DFS1-00-0050MR	

Note:

M310 is supplied with a rechargeable battery, AC Adaptor, power leads, mandrels, USB data cable, SC (for OTDR and OPM), FC and ST (OTDR only), 1.25mm and 2.5mm (OPM only), strap, stylus and USB pen drive and Quick reference and installation guides.
 DFS1 is supplied with that Universal 1.25mm male PC, Universal 2.5mm male PC, SC and FC Female Bulkhead Adaptors, LC female Bulkhead Adaptors.
 OLS4 is supplied with 2 x AA batteries, Mandrels, SC Adaptor, CD and Quick reference Guides.
 For further Adaptor Tip Options see page 22

Accessories

M310/M210 OTDR ADAPTORS	PART NUMBER
FC Adaptor for OTDR port	2900-50-0002MR
SC Adaptor for OTDR port	2900-50-0003MR
ST Adaptor for OTDR port	2900-50-0004MR
LC Adaptor for OTDR port	2900-50-0006MR
FC Adaptor for OPM port	2900-52-0001MR
SC Adaptor for OPM port	2900-52-0002MR
ST Adaptor for OPM port	2900-52-0003MR
LC Adaptor for OPM port	2900-52-0004MR
2.5mm universal Adaptor for OPM port	2900-52-0005MR
1.25mm universal Adaptor for OPM port	2900-52-0006MR
UNIVERSAL ADAPTORS	
2.5mm universal for VFL port	2900-50-0007MR
1.25mm universal for VFL port	2900-50-0010MR
Universal flip-top dust cap for UCI outputs	8800-00-0072PR

OPM5 ADAPTORS	PART NUMBER
2.5mm universal	8800-00-0214
1.25mm universal	8800-00-0224
FC	8800-00-0200
SC	8800-00-0209
ST	8800-00-0202
LC Simplex/Duplex	8800-00-0225
E-2000	8800-00-0221
MU simplex	8800-00-0226

OLS4 ADAPTOR	PART NUMBER
FC Adaptor for OTDR port	2900-50-0002MR
SC Adaptor for OTDR port	2900-50-0003MR
ST Adaptor for OTDR port	2900-50-0004MR
LC Adaptor for OTDR port	2900-50-0006MR
Universal flip-top dust cap for UCI outputs	8800-00-0072PR

DSF1 ADAPTOR TIPS	PART NUMBER
MTP/PC and MTP/APC Bulkhead	OP-DFS1-00-0042MR
MTP/PC	OP-DFS1-00-0037MR
MTP/APC	OP-DFS1-01-0010MR
1.25mm Universal (accepts LC and MU male connector ferrule)	OP-DFS1-00-0001MR
LC female bulkhead Adaptor	OP-DFS1-00-0004MR
LCA male connector ferrule	OP-DFS1-01-0001MR
LCA female bulkhead Adaptor	OP-DFS1-01-0004MR
2.5mm Universal (accepts FC, SC, ST and E2 male connector ferrule)	OP-DFS1-00-0002MR
FC and SC female bulkhead Adaptor	OP-DFS1-00-0003MR
FCA, SCA and E2A male connector ferrule	OP-DFS1-01-0002MR
FCA and SCA female bulkhead Adaptor	OP-DFS1-01-0003MR
E2A female bulkhead Adaptor	OP-DFS1-01-0008MR
ST female bulkhead Adaptor	OP-DFS1-00-0014MR
MU female bulkhead Adaptor	OP-DFS1-00-0026MR
Short extended SC and FC	OP-DFS1-00-0010MR
Short extended ST	OP-DFS1-00-0015MR
Short extended LC	OP-DFS1-00-0019MR
60° Angle tip for SC and FC	OP-DFS1-00-0013MR
60° Angle tip for ST	OP-DFS1-00-0018MR
60° Angle tip for LC	OP-DFS1-00-0022MR

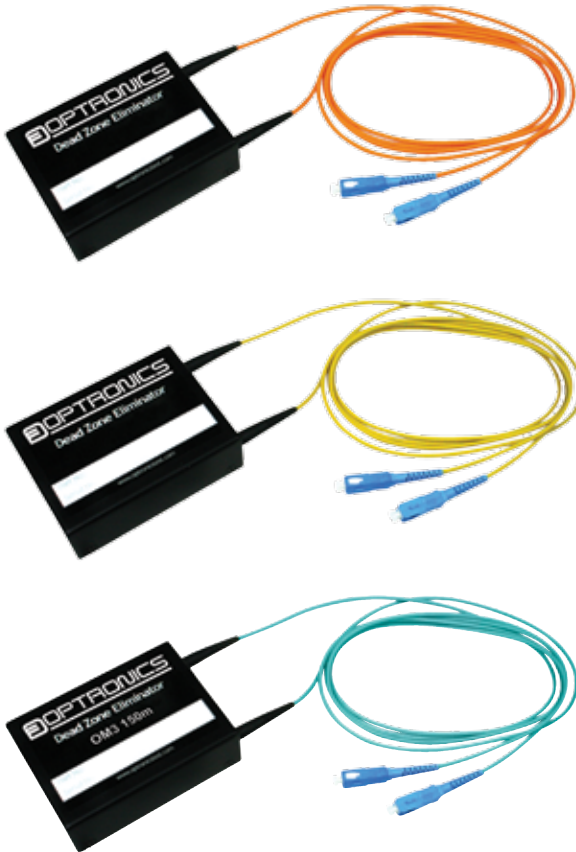
MTP Test Assemblies

12 FIBRE FERRULES MTP TEST ASSEMBLIES	PART NUMBER
MTP FEMALE (EQUIP) – MTP (ELITE) FEMALE 12 Fibres 50/125 OM4 3mm OD LSZH AQUA 2m Polarity A	MFAMEF120M4P2A
MTP FEMALE (EQUIP) – MTP (ELITE) MALE 12 Fibres 50/125 OM4 3mm OD LSZH AQUA 2m Polarity A	MFAMEM120M4P2A
MTP FEMALE (EQUIP) – MTP (ELITE) FEMALE 12 Fibres 9/125 SM 3mm OD LSZH Yellow 2m Polarity A	MFMEF1209P2A
MTP FEMALE (EQUIP) – MTP (ELITE) MALE 12 Fibres 9/125 SM 3mm OD LSZH Yellow 2m Polarity A	MFMEM1209P2A

24 FIBRE FERRULES MTP TEST ASSEMBLIES	PART NUMBER
Y Assembly 2 x MTP FEMALE (EQUIP)- 1 x MTP (ELITE) FEMALE 24 Fibres 50/125 OM4 3mm OD LSZH AQUA 2m	MFAM2EF240M4P2A
Y Assembly 2 x MTP FEMALE (EQUIP)- 1 x MTP (ELITE) MALE 24 Fibres 50/125 OM4 3mm OD LSZH AQUA 2m	MFAM2EM240M4P2A
Y Assembly 2 x MTP FEMALE (EQUIP) – 1x MTP FEMALE 24 Fibres 9/125 SM 3mm OD LSZH YELLOW 2m	MFAM2F2409P2A
Y Assembly 2 x MTP FEMALE (EQUIP) – 1x MTP FEMALE 24 Fibres 9/125 SM 3mm OD LSZH YELLOW 2m	MFAM2M2409P2A

ADAPTORS	PART NUMBER
Adaptor MTP SC Simplex Footprint Reduced Flange Opposed Key Black 2 Dust Cap	MTPMTPADSCRF2
Adaptor MTP SC Simplex Footprint Reduced Flange Aligned Key Grey 2 Dust Cap	MTPMTPADSCRF2B

OTDR Launch Leads



OTDRs require launch and receive test cables to measure the end-to-end loss of optical fibre links. A launch cable, which connects the OTDR to the link under test, reveals the insertion loss and reflectance of the near-end connection. A receive cable, which is connected to the far-end of the link, reveals the insertion loss and reflectance of the far-end connection.

Optronics launch cables are available in a compact rugged box with 1.5m connectorised tails (or made to custom lengths). These can be neatly stored underneath the box with the provided hook and loop ties. The standard multimode product is supplied as a 150m launch lead while singlemode is supplied in 500m lengths. Lengths of up to 1Km are available on request. The tails can be terminated

with the connector combination of your choice. It is supplied in a protective pouch with a handy belt loop. Available fibre types are OM1, OM2, OM3, OM4, OS1/2 and G657A1.

Application

- > Measurement of end-end loss in fibre optic links when used in conjunction with an OTDR

Key Facts

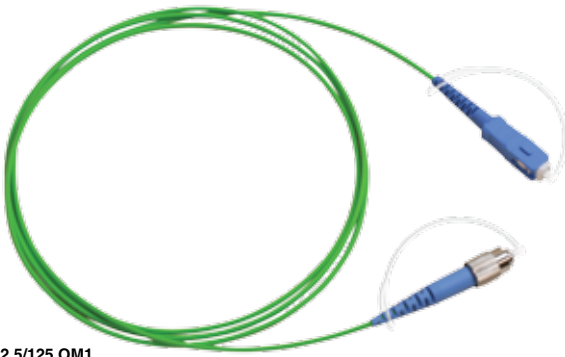
- > 1.5m tails
- > Choice of connectors
- > Standard Fibre Lengths 150m (MM) / 500m (SM)
- > No splicing
- > Compact solution
- > Rugged construction
- > 50N cable retention force

Ordering Information

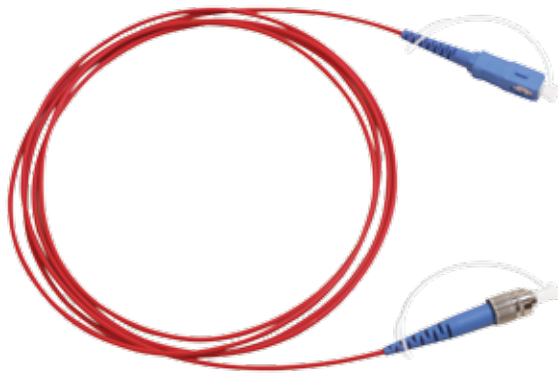
DESCRIPTION	PART NUMBER
SC - SC 62.5nm Multimode OTDR Launch Lead	SCSC62DZCOMPACT
SC - LC OM3 Multimode OTDR Launch Lead	SCLCOM3DZCOMPACT
SC - ST OM4 Multimode OTDR Launch Lead	SCSTOM4DZCOMPACT
SC - FC OS1/2 Singlemode OTDR Launch Lead	SCFC09DZCOMPACT

These are just a small example of the wide range of configuration options available visit www.optronicsnet.com/tools-test-equipment to view the configurator

Test Reference Leads



62.5/125 OM1



50/125 OM2 / OM3 / OM4



OS1 / OS2

Our range of master test leads are ideal for high precision and high performance optical test applications. The test leads are terminated with the highest quality physical contact (singlemode) A grade Zirconia ferrule connectors. The connectors are manufactured with precision mounting and polishing techniques which ensure excellent mating characteristics and optimised optical performance.

Applications

- > Optical network testing
- > Testing Labs
- > Critical telecoms and data centre applications
- > Instrumentation
- > Termination houses

Key Facts

- > Optimised geometry of fibre, cable and connector providing reduced installation time and cost through improved accuracy and reliability of measurement
- > Conforms to IEC, EIA-TIA, and Telecordia performance requirements
- > Supplied with ultra tight geometry ITU-T G.652D (LWP) singlemode and multimode optical fibres
- > Available with FC, SC, LC, & ST high performance connector types to suit majority of applications
- > Available in standard lengths
- > RoHS, REACH & SvHC compliant
- > Optional foam lined storage case for added protection
- > Tethered dust caps for protection of the connector end face
- > End face geometry, concentricity and IL / RL test report provided

Ordering Information

DESCRIPTION	PART NUMBER
Master Test Lead XX ¹ (Master) - YY ² (Equipment) 62/125 Simplex 2mm LSZH 1.5m (OM1)	XXYY1TS2LG1.5TL
Master Test Lead XX ¹ (Master) - YY ² (Equipment) 50/125 Simplex 2mm LSZH 1.5m (OM2, OM3, OM4)*	XXYY3TS2LR1.5TL
Master Test Lead XX ¹ (Master) - YY ² (Equipment) 9/125 Simplex 2mm LSZH 1.5m (OS1, OS2)*	XXYY9TS2LB1.5TL

¹Master side XX – SC, LC, FC, ST. Single mode can be UPC or APC

²Equipment side YY – SC, LC, FC and ST. UPC only

SC, FC, ST, LC and MU Connector Cleaners



Optronics Fibre Optic Connector Cleaners are mechanical cleaning tools designed to clean connectors residing in an adaptor or faceplate and unmated connectors. These cleaners use a novel dry cleaning strand to gently sweep and lift away dust and residues from the connector end face.

- > Optronics CC2.5 Fibre Optic Connector Cleaner Cleans adaptor mounted SC's, FC's and ST's (APC and UPC)
- > Optronics CC1.25 Fibre Optic Connector Cleaner – Cleans adaptor mounted MU's and LC's

Ordering Information

DESCRIPTION	PART NUMBER
2.5mm SC, FC and ST (APC and UPC) Connector Cleaner	OPT-CC2.5
1.25mm LC and MU Connector Cleaner	OPT-CC1.25

MPO/MTP Connector Cleaner



The MPO/MTP Connector Cleaner is a high-performance device designed for cleaning the ferrule endfaces of MPO/MTP connectors. This tool cleans the fibre endface without the use of alcohol, cleaning all 12 fibres at once.

- > Cleans male and female MPO/MTP ferrules
- > Simple pushing motion to engage tool
- > Audible CLICK to alert the operator when tools is fully engaged
- > Nozzle is keyed for precise alignment of the cleaning tip to the fibre array
- > Alignment cap lid opens for cleaning the unmated connectors Intermateability with FOCIS-5 (MPO)
- > Capable of cleaning MPO ferrules inside or outside an MPO adaptor
- > Capable of cleaning ferrules with or without guide pins
- > 500 cleanings

Ordering Information

DESCRIPTION	PART NUMBER
MPO Connector Cleaner	OPT-CCMPO

Foam Buds



Foam buds are the ideal consumable for cleaning bulkheads after installation. They are used to clean the end faces of installed connectors, from inside the enclosure. The snug fit from the foam head will also remove any contaminants found inside the Adaptor.

Ordering Information

DESCRIPTION	PART NUMBER
2.5mm Foam Buds (100 pcs)	CLEANBUDS

Micro Sticks



Micro fibre sticks are the ideal consumable for cleaning 1.25mm bulkheads after installation. They can be used to clean the end faces of installed connectors, from inside the enclosure.

Cleaning is achieved by inserting the micro fibre tip inside the Adaptor's aperture and twisting once. The micro fibre material allows the user to clean installed connector end faces without scratching the surface, and ensures a perfect clean first time.

Ordering Information

DESCRIPTION	PART NUMBER
1.25mm Micro Fibre Sticks	CLEANSTICK

IPA Saturated Wipes



The Optronics pre-saturated wipes contain 99% pure IPA (isopropyl alcohol). The wipe material is made from a high quality, non-abrasive, low lint fabric. They can efficiently remove dust, grease, oil, flux, soils and other contaminants or residues from substrates prior to bonding such as bare optical fibre during a termination or splicing process.

Ordering Information

DESCRIPTION	PART NUMBER
IPA Saturated Wipes 50pcs	CLEANWIPES

Product Warranty Information

Register online



www.optronicsnet.com/registration

Optronics Power Meters are warranted for **Five Years** from purchase. All Other Optronics Test and Inspection Equipment is covered by a **One Year Warranty**.

- > Warranty extends from date of purchase from Authorised Reseller
- > For support contact Customer Services at cseurope@optronicsnet.com
- > Authorised product returns will be processed at our UK Service Centre
- > Product may be registered online at www.optronicsnet.com/registration



Catalogues

All the latest Optronics Catalogues in one convenient location

New

Guide to Patch Cords and Pigtails

A comprehensive guide to the wide range of Optronics patch cord and pigtail assemblies. Covering data and premise networks to data centres and telecom applications, this guide provides examples of applications plus a full listing of cable and connector specifications making it invaluable in assisting you to choose the right patch cord or pigtail.

New

Multifibre Cable Assembly Guide

This guide takes you through the often complicated world of Pre-Terminated Cable Assemblies. From Campus installations to SANs and Central Offices this guide will show you the step by step process of choosing the right assembly for the application.

Visit www.optronicsnet.com/catalogues to view our full range of catalogues, brochures and guides

www.optronicsnet.com



Other catalogues available for download at
www.optronicsnet.com




Your local Optronics approved stockist

OPTRONICS

Optronics Limited
Tel: +44 (0)1908 441 121
www.optronicsnet.com

Version 3.0 Copyright © Optronics 2014 All Rights Reserved E&OE
OPTTANDMCAT

 and "FirstLight" are registered trademarks