

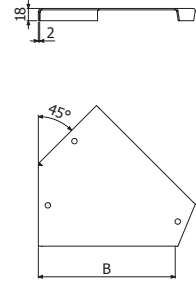


**TSCPWT45**



	B		GS	
	mm	inch	REF.	kg/ud
TSCPWT45 100	100	4	2/10215	0,26
TSCPWT45 200	200	8	2/10216	0,59
TSCPWT45 300	300	12	2/10217	1,04
TSCPWT45 400	400	16	2/10218	1,61
TSCPWT45 500	500	20	2/10219	2,48
TSCPWT45 600	600	24	2/10220	3,53

3/100 x DIN 7991 M6x16 (2/10265 - EZ)



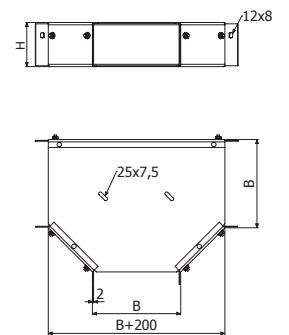
**TEWT**



	(Kg)	B		H		GS	
		mm	inch	mm	inch	REF.	kg/ud
TEWT 100X100	150	100	4	100	4	2/10165	2,35
TEWT 200X100	150	200	8	100	4	2/10166	3,47
TEWT 300X100	150	300	12	100	4	2/10167	4,90
TEWT 400X100	150	400	16	100	4	2/10168	6,64
TEWT 500X100	150	500	20	100	4	2/10169	8,70
TEWT 600X100	150	600	24	100	4	2/10170	11,08

6/100 x B1 (2/4356 - EZ)

1 x TEWT --> 1 x SV (B)

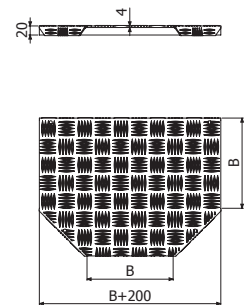


**TTEWT**

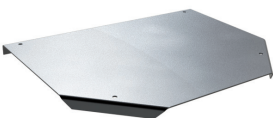


	(Kg)	B		AL	
		mm	inch	REF.	kg/ud
TTEWT 100	150	100	4	2/10221	0,72
TTEWT 200	150	200	8	2/10222	1,47
TTEWT 300	150	300	12	2/10223	2,46
TTEWT 400	150	400	16	2/10224	3,69
TTEWT 500	150	500	20	2/10225	5,16
TTEWT 600	150	600	24	2/10226	6,88

4/100 x DIN 7991 M6x16 (2/10265 - EZ)



**TSTEWT**



	B		GS	
	mm	inch	REF.	kg/ud
TSTEWT 100	100	4	2/10227	0,94
TSTEWT 200	200	8	2/10228	1,91
TSTEWT 300	300	12	2/10229	3,20
TSTEWT 400	400	16	2/10230	4,80
TSTEWT 500	500	20	2/10231	6,72
TSTEWT 600	600	24	2/10232	8,95

4/100 x DIN 7991 M6x16 (2/10265 - EZ)

