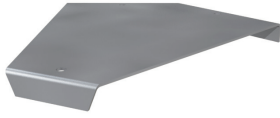


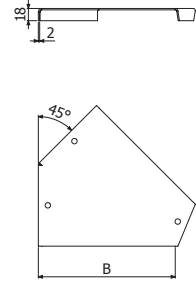


TSCPWT45



| | B | | GS | |
|--------------|-----|------|---------|-------|
| | mm | inch | REF. | kg/ud |
| TSCPWT45 100 | 100 | 4 | 2/10215 | 0,26 |
| TSCPWT45 200 | 200 | 8 | 2/10216 | 0,59 |
| TSCPWT45 300 | 300 | 12 | 2/10217 | 1,04 |
| TSCPWT45 400 | 400 | 16 | 2/10218 | 1,61 |
| TSCPWT45 500 | 500 | 20 | 2/10219 | 2,48 |
| TSCPWT45 600 | 600 | 24 | 2/10220 | 3,53 |

3/100 x DIN 7991 M6x16 (2/10265 - EZ)



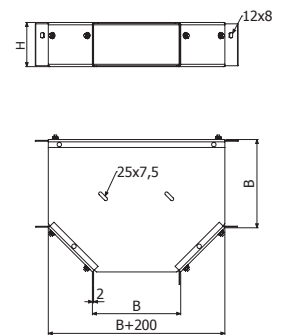
TEWT



| | (Kg) | B | | H | | GS | |
|--------------|------|-----|------|-----|------|---------|-------|
| | | mm | inch | mm | inch | REF. | kg/ud |
| TEWT 100X100 | 150 | 100 | 4 | 100 | 4 | 2/10165 | 2,35 |
| TEWT 200X100 | 150 | 200 | 8 | 100 | 4 | 2/10166 | 3,47 |
| TEWT 300X100 | 150 | 300 | 12 | 100 | 4 | 2/10167 | 4,90 |
| TEWT 400X100 | 150 | 400 | 16 | 100 | 4 | 2/10168 | 6,64 |
| TEWT 500X100 | 150 | 500 | 20 | 100 | 4 | 2/10169 | 8,70 |
| TEWT 600X100 | 150 | 600 | 24 | 100 | 4 | 2/10170 | 11,08 |

6/100 x B1 (2/4356 - EZ)

1 x TEWT --> 1 x SV (B)

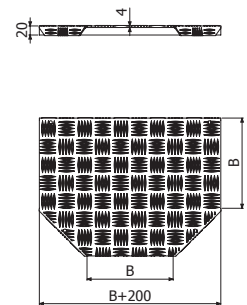


TTEWT

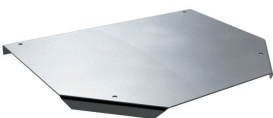


| | (Kg) | B | | AL | |
|-----------|------|-----|------|---------|-------|
| | | mm | inch | REF. | kg/ud |
| TTEWT 100 | 150 | 100 | 4 | 2/10221 | 0,72 |
| TTEWT 200 | 150 | 200 | 8 | 2/10222 | 1,47 |
| TTEWT 300 | 150 | 300 | 12 | 2/10223 | 2,46 |
| TTEWT 400 | 150 | 400 | 16 | 2/10224 | 3,69 |
| TTEWT 500 | 150 | 500 | 20 | 2/10225 | 5,16 |
| TTEWT 600 | 150 | 600 | 24 | 2/10226 | 6,88 |

4/100 x DIN 7991 M6x16 (2/10265 - EZ)



TSTEWT



| | B | | GS | |
|------------|-----|------|---------|-------|
| | mm | inch | REF. | kg/ud |
| TSTEWT 100 | 100 | 4 | 2/10227 | 0,94 |
| TSTEWT 200 | 200 | 8 | 2/10228 | 1,91 |
| TSTEWT 300 | 300 | 12 | 2/10229 | 3,20 |
| TSTEWT 400 | 400 | 16 | 2/10230 | 4,80 |
| TSTEWT 500 | 500 | 20 | 2/10231 | 6,72 |
| TSTEWT 600 | 600 | 24 | 2/10232 | 8,95 |

4/100 x DIN 7991 M6x16 (2/10265 - EZ)

