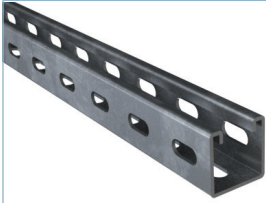


**41X41X2-3S**


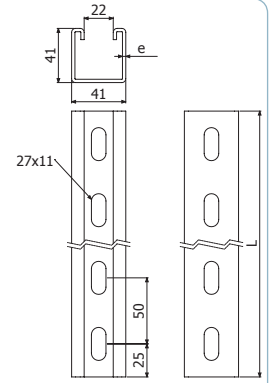
	e mm	GS		GC	
		REF.	kg/m	REF.	kg/m
41X41X2-3S	2	2/17313	2,02	2/17312	2,217
TF41 PVC (2/5627)					



L = 3 m (10 ft)



TF41


**SBL41**

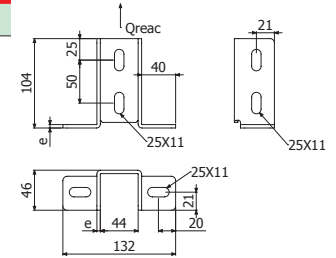
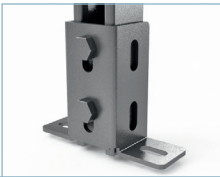

SBL41	Q <sub>reac</sub> kg	Pap N-m	e mm	GS		e mm	GC	
				REF.	kg/m		REF.	kg/ud
	600	40	3	2/7058	0,40	4	2/6472	0,44



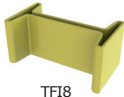
2 x DIN933 M10X30 (2/17547-304) + 2 x TM41 M10 (2/17584-GC)



2/50 x B3 (2/8827)


**I8**


I8 3M

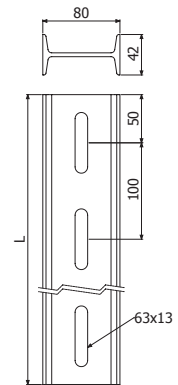


TF18

I8 3M	L		GC	
	m	ft	REF.	kg/ud
	3	10	2/6350	17,43
TF18 PVC (2/6947)				



KI8 + 4/50 x B3 (2/8827-GC)


**KI8**


KI8	GC	
	REF.	kg/ud
	2/6056	1,77

