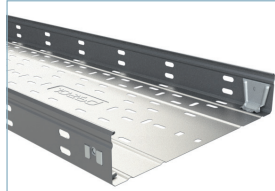
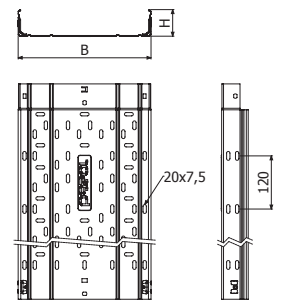


**ER2E H60**

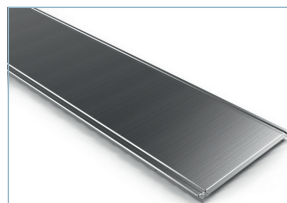


L = 3 m (10 ft)

|             | B   |      | H  |        | GS      |      |
|-------------|-----|------|----|--------|---------|------|
|             | mm  | inch | mm | inch   | REF.    | kg/m |
| ER2E 100X60 | 100 | 4"   | 60 | 2 3/8" | 2/10233 | 0,95 |
| ER2E 150X60 | 150 | 6"   | 60 | 2 3/8" | 2/10234 | 1,17 |
| ER2E 200X60 | 200 | 8"   | 60 | 2 3/8" | 2/10235 | 1,46 |
| ER2E 300X60 | 300 | 12"  | 60 | 2 3/8" | 2/10236 | 2,03 |
| ER2E 400X60 | 400 | 16"  | 60 | 2 3/8" | 2/10237 | 2,86 |
| ER2E 500X60 | 500 | 20"  | 60 | 2 3/8" | 2/10238 | 3,38 |
| ER2E 600X60 | 600 | 24"  | 60 | 2 3/8" | 2/10239 | 3,91 |

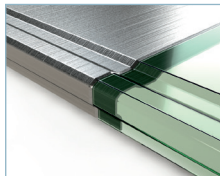


**TERE**

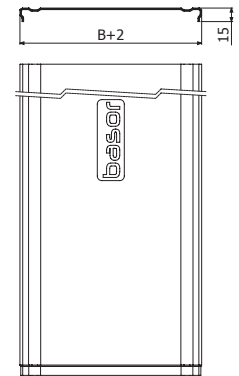


L = 3 m (10 ft)

400/500/600 - L = 2 m (6,56 ft)



|             | B   |      | GS     |      |
|-------------|-----|------|--------|------|
|             | mm  | inch | REF.   | kg/m |
| TERE 100    | 100 | 4"   | 2/1312 | 0,55 |
| TERE 150    | 150 | 6"   | 2/1313 | 0,76 |
| TERE 200    | 200 | 8"   | 2/1314 | 0,98 |
| TERE 300    | 300 | 12"  | 2/1316 | 1,55 |
| TERE 400 2M | 400 | 16"  | 2/1317 | 2,19 |
| TERE 500 2M | 500 | 20"  | 2/1318 | 3,11 |
| TERE 600 2M | 600 | 24"  | 2/1319 | 3,95 |



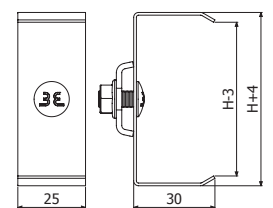
**PTERE**



|           | H   |        | i304   |       |
|-----------|-----|--------|--------|-------|
|           | mm  | inch   | REF.   | kg/ud |
| PTERE 35  | 35  | 1 3/8" | 2/7059 | 0,05  |
| PTERE 60  | 60  | 2 3/8" | 2/7060 | 0,05  |
| PTERE 80  | 80  | 3 1/7" | 2/7061 | 0,06  |
| PTERE 100 | 100 | 4"     | 2/7062 | 0,06  |



4 x PTERE => 1 x TERE



**6 s!**

