



FPT1515FE46.4

Name: **Fire protection junction box**
150 x 150 mm, FE, tapping terminals 4 x 1,5-6 mm², E90

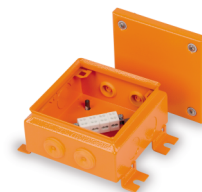
Type: FPT1515FE46.4

GTIN: 6438100180836

Description: Fire protection junction boxes are designed and manufactured to maintain functionality for 30-90 minutes in a case of fire.

Package: 1/1

Unit: PCS



Technical specification

Content Enclosure base, cover, cover screw with gasket and cage nuts, screw anchors for wall/ceiling mounting

Fire resistance class E30-E90

Electrical values

Nominal current A 41 A

Nominal insulation voltage 750 V

Ratings

Degree of protection IP66

ETIM class Box/housing for surface mounting on the wall/ceiling

Mechanical

Impact strength IK09

Dimensions

Conductor cross-section 6 mm²

Size 150 x 150 x 95 mm

Temperatures

Ambient temperature -25 °C...+40 °C, +35°C (24 h)

Materials

Base Mild steel, polyester painted

Cover Mild steel, polyester painted

Cover screws Steel

Gasket Polyurethane

Colors

Color Orange

Color code RAL2003

Certificates

Standards EN 60670-1:2005, EN 60670-22:2006, EN 60947-7-1:2009, EN 60998-2-1:2004, DIN 4102-12



Saves Your Energy

PRODUCT CARD

20.5.2016

2/2

FPT1515FE46.4

ETIM

Max. conductor cross section	6 mm ²
Equipped with	Support rail
Shape	Square
Mounting method	Wall-/ceiling mounting
For tubediameter	25 mm
Length	150 mm
Width	150 mm
Depth	95 mm
Number of inlets	8
Type of housing feed-through	Seal membrane
Material	Steel
Surface protection	Untreated
Colour	Orange
Degree of protection (IP)	IP66
Cover	Not transparent
Cover attachment	Screwed
Cover model	Blind cover
Rated insulation voltage Ui	750 V
Circuit integrity	E 90
For Ex-zone gas	None
For Ex-Zone dust	None

Ensto Finland Oy

Ensio Miettisen katu 2
P.O.Box 77
06101 Porvoo, Finland

Tel. +358 204 76 21
Fax +358 204 76 2516

www.ensto.com