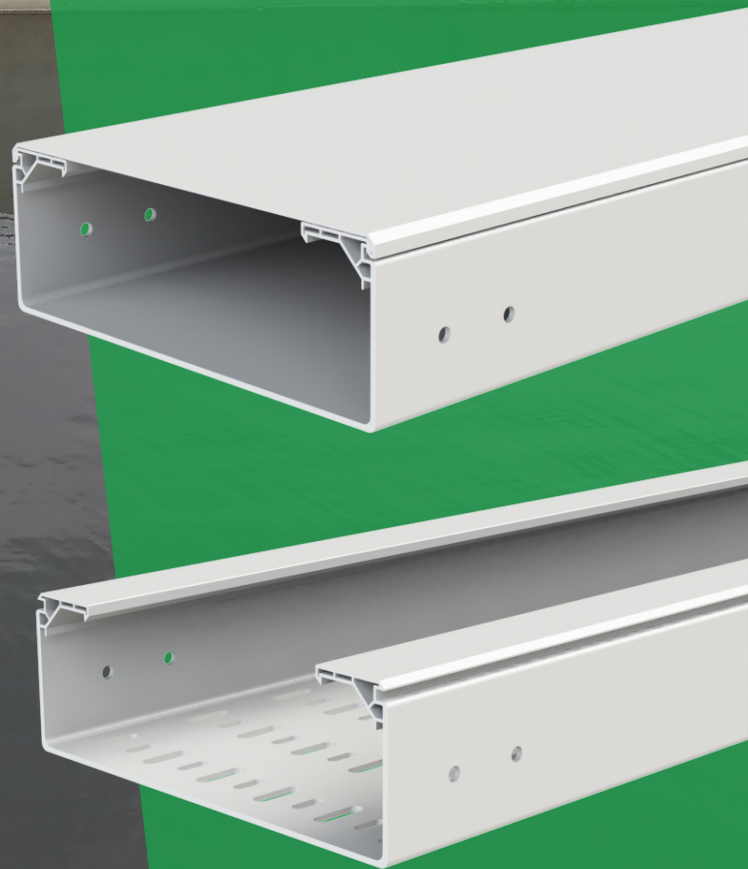


Kabelbahn PVC,
Basorplast
BPE





BASORPLAST

3E Basor

CABLE TRAY SPECIALIST



UNE-EN 61537
UNE-EN 50085



UNE-EN 61537
UNE-EN 50085
UNE 23727
UL94



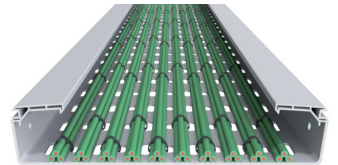
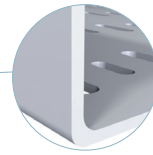
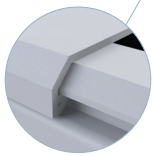
UNE-EN 60695



UNE-EN 61537



UNE-EN 50085



Mod. 60x100 10J
UNE-EN 61537
UNE-EN 50085



IEC 60529



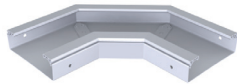
IEC 50102



ISO/TR 10358
DIN 8061



TBPE



CPBPE



TCPBPE



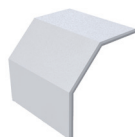
CCBPE



TCCBPE



CXBPE



TCXBPE



PDBPE



TFBPE



PSBPE



JUBPE



JUBPE-AB



JUBPE-AB



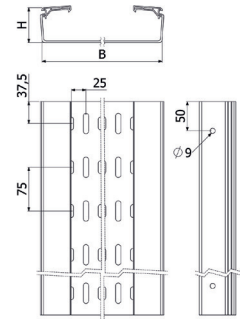
CTBP



KABELBAHN BPE-P / H60



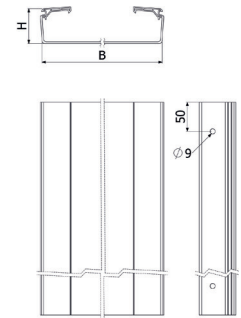
3m (10ft)	↑ ↓		↔		PVCMI UV	KG/M
	mm	inch	mm	inch		
BPE 60X100	60	2 3/8"	100	4"	210070	0.73
BPE 60X150	60	2 3/8"	150	6"	210071	0.98
BPE 60X200	60	2 3/8"	200	8"	210072	1.45
BPE 60X300	60	2 3/8"	300	12"	210073	2.34



KABELBAHN BPE-C / H60



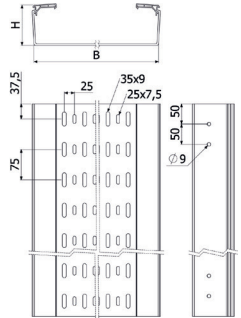
3m (10ft)	↑ ↓		↔		PVCMI UV	KG/M
	mm	inch	mm	inch		
BPE-C 60X100	60	2 3/8"	100	4"	210062	0.77
BPE-C 60X150	60	2 3/8"	150	6"	210063	1.03
BPE-C 60X200	60	2 3/8"	200	8"	210064	1.54
BPE-C 60X300	60	2 3/8"	300	12"	210065	2.48



KABELBAHN BPE-P / H100



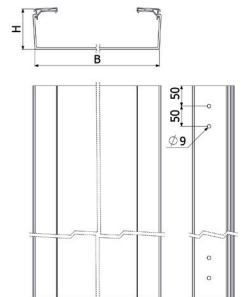
3m (10ft)	↑ ↓		↔		PVCMI UV	KG/M
	mm	inch	mm	inch		
BPE 100X200	100	4"	200	8"	210074	2.25
BPE 100X300	100	4"	300	12"	210075	3.63
BPE 100X400	100	4"	400	16"	210076	4.30
BPE 100X600	100	4"	600	24"	210077	6.40



KABELBAHN BPE-C / H100



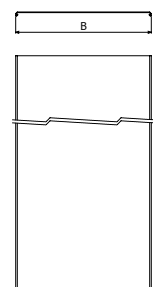
3m (10ft)	↑ ↓		↔		PVCMI UV	KG/M
	mm	inch	mm	inch		
BPE-C 100X200	100	4"	200	8"	210066	2.38
BPE-C 100X300	100	4"	300	12"	210067	3.45
BPE-C 100X400	100	4"	400	16"	210068	4.54
BPE-C 100X600	100	4"	600	24"	210069	6.72



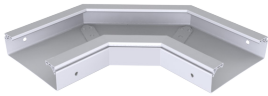
ABDECKUNGEN TBPE



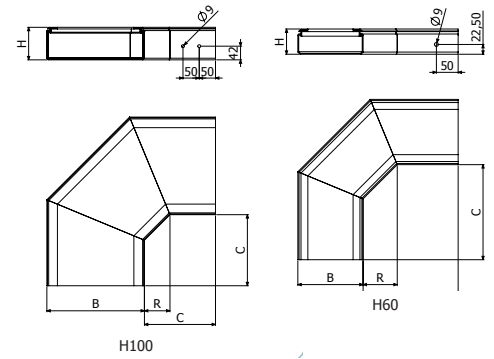
3m (10ft)	↔		PVCMI UV	KG/M
	mm	inch		
TBPE 100	100	4"	210078	0.37
TBPE 150	150	6"	210079	0.50
TBPE 200	200	8"	210080	0.77
TBPE 300	300	12"	210081	1.10
TBPE 400	400	16"	210082	1.53
TBPE 600	600	24"	210083	2.10



FLACHBOGEN 90° CPBPE



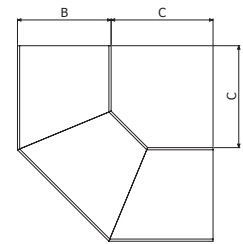
CPBPE	↓↑		↔		📄	
	mm	inch	mm	inch	PVCM1 UV	KG/UD
CPBPE 60X100	60	2 3/8"	100	4"	210089	0.40
CPBPE 60X150	60	2 3/8"	150	6"	210090	0.54
CPBPE 60X200	60	2 3/8"	200	8"	210091	0.91
CPBPE 60X300	60	2 3/8"	300	12"	210092	1.61
CPBPE 100X200	100	4"	200	8"	210093	1.24
CPBPE 100X300	100	4"	300	12"	210094	2.14
CPBPE 100X400	100	4"	400	16"	210095	3.27
CPBPE 100X600	100	4"	600	24"	210096	4.08



ABDECKUNGEN TCPBPE



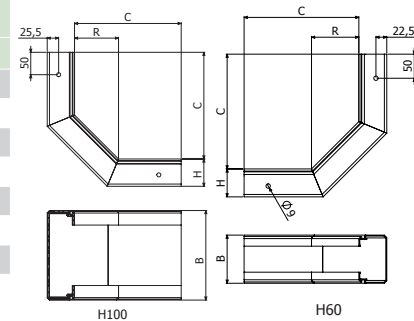
TCPBPE	B		C		📄	
	mm	inch	mm	inch	PVCM1 UV	KG/UD
TCPBPE 100	100	4"	220	8 1/2"	210097	0.18
TCPBPE 150	150	6"	220	8 1/2"	210098	0.26
TCPBPE 200	200	8"	220	8 1/2"	210099	0.43
TCPBPE 300	300	12"	220	8 1/2"	210100	0.71
TCPBPE 400	400	16"	220	8 1/2"	210101	1.12
TCPBPE 600	600	24"	240	9 1/2"	210102	1.94



VERTIKALBOGEN STEIGEND CCBPE



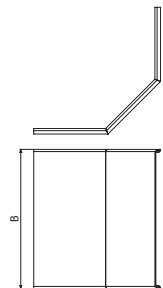
CCBPE	↓↑		↔		R		📄	
	mm	inch	mm	inch	mm	inch	PVCM1 UV	KG/UD
CCBPE 60X100	60	2 3/8"	100	4"	240	9 1/2"	210103	0.39
CCBPE 60X150	60	2 3/8"	150	6"	240	9 1/2"	210104	0.49
CCBPE 60X200	60	2 3/8"	200	8"	240	9 1/2"	210105	0.78
CCBPE 60X300	60	2 3/8"	300	12"	240	9 1/2"	210106	1.19
CCBPE 100X200	100	4"	200	8"	275	10 3/8"	210107	1.37
CCBPE 100X300	100	4"	300	12"	275	10 3/8"	210108	1.98
CCBPE 100X400	100	4"	400	16"	275	10 3/8"	210109	2.55
CCBPE 100X600	100	4"	600	24"	275	10 3/8"	210110	3.23



ABDECKUNGEN TCCBPE



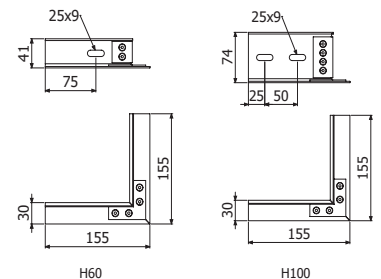
TCCBPE	B		📄	
	mm	inch	PVCM1 UV	KG/UD
TCCBPE 60X100	100	4"	210111	0.18
TCCBPE 60X150	150	6"	210112	0.24
TCCBPE 60X200	200	8"	210113	0.37
TCCBPE 60X300	300	12"	210114	0.52
TCCBPE 100X200	200	16"	210115	0.56
TCCBPE 100X300	300	12"	210116	0.61
TCCBPE 100X400	400	16"	210117	0.81
TCCBPE 100X600	600	24"	210118	1.04



KREUZUNG PDBPE



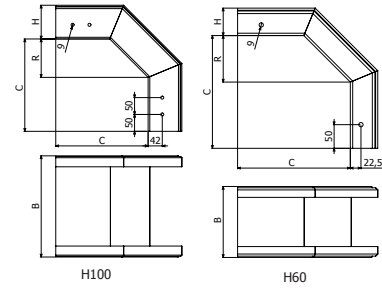
PDBPE	📄	
	PVCM1 UV	KG/UD
PDBPE 60	223021	0.24
PDBPE 100	223022	0.48



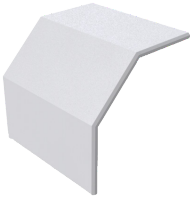
VERTIKALBOGEN FALLEND CXBPE



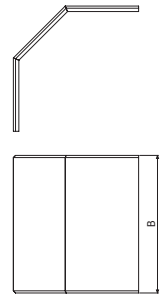
CXBPE	↓		↔		R		PVCMI UV	KG/UD
	mm	inch	mm	inch	mm	inch		
CXBPE 60X100	60	2 3/8"	100	4"	100	4"	210119	0.39
CXBPE 60X150	60	2 3/8"	150	6"	100	4"	210120	0.49
CXBPE 60X200	60	2 3/8"	200	8"	100	4"	210121	0.78
CXBPE 60X300	60	2 3/8"	300	12"	100	4"	210122	1.19
CXBPE 100X200	100	4"	200	8"	115	4 5/8"	210123	1.37
CXBPE 100X300	100	4"	300	12"	115	4 5/8"	210124	1.98
CXBPE 100X400	100	4"	400	16"	115	4 5/8"	210125	2.55
CXBPE 100X600	100	4"	600	24"	115	4 5/8"	210126	3.23



ABDECKUNGEN TCXBPE



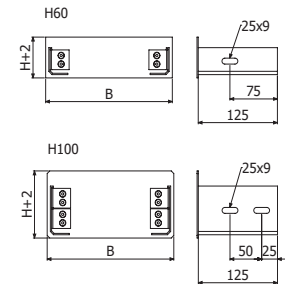
TCXBPE	B		PVCMI UV	KG/UD
	mm	inch		
TCXBPE 60X100	100	4"	210127	0.22
TCXBPE 60X150	150	6"	210128	0.30
TCXBPE 60X200	200	8"	210129	0.49
TCXBPE 60X300	300	12"	210130	0.65
TCXBPE 100X200	200	16"	210131	0.75
TCXBPE 100X300	300	12"	210132	0.82
TCXBPE 100X400	400	16"	210133	1.14
TCXBPE 100X600	600	24"	210134	1.39



ENDDECKEL CCBPE



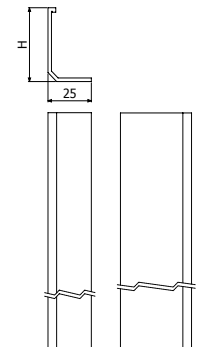
TFBPE	↓		↔		PVCMI UV	KG/UD
	mm	inch	mm	inch		
TFBPE 60X100	60	2 3/8"	100	4"	223023	0.09
TFBPE 60X150	60	2 3/8"	150	6"	223024	0.13
TFBPE 60X200	60	2 3/8"	200	8"	223025	0.15
TFBPE 60X300	60	2 3/8"	300	12"	223026	0.21
TFBPE 100X200	100	4"	200	8"	223027	0.24
TFBPE 100X300	100	4"	300	12"	223028	0.31
TFBPE 100X400	100	4"	400	16"	223029	0.40
TFBPE 100X600	100	4"	600	24"	223030	0.55



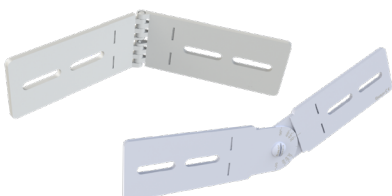
TRENNSTEG PSBPE



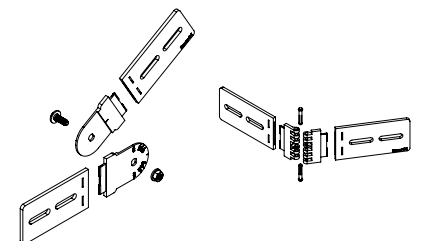
PSBPE	3M		H		PVCMI UV	KG/M
	mm	inch	mm	inch		
PSBPE 60	60	2 3/8"	100	4"	210144	0.09
TPSBPE 100	100	4"	100	4"	210145	0.13



VERTIKALES GELENKSTÜCK JUBPE-AB KIT



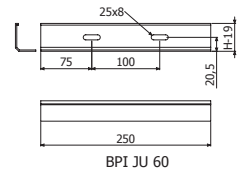
JUBPE-AB KIT	↓		PVCMI UV	KG/UD
	mm	inch		
JUBPE-AB 60	60	2 3/8"	223613	0.1
JUBPE-AB 100	100	4"	223614	0.2



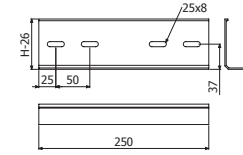
HORIZONTALES GELENKSTÜCK JUBPE



JUBPE	Dimensions		Material & Weight	
	mm	inch	PVCM1 UV	KG/UD
JUBPE 60	60	2 3/8"	210084	0.05
JUBPE 100	100	4"	210085	0.09



BPI JU 60



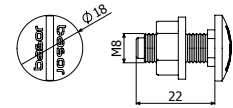
BPI JU 100



SCHRAUBE TCPBPE



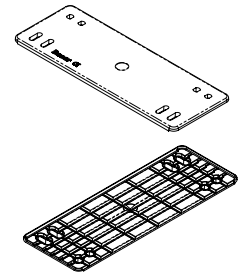
CTBP	Material & Weight	
	PVCM1 UV	KG/UD
CTBP-100	210017	0.40



ZENTRAL GELENKSTÜCK JUBPE-C



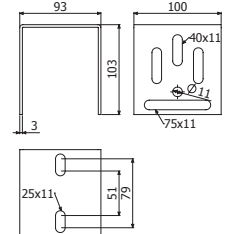
JUBPE	Dimensions		Material & Weight	
	mm	inch	PVCM1 UV	KG/UD
JUBPE-C	-	-	218797	0.30



KSHGR



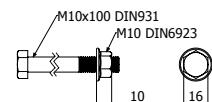
KSHGR	Material & Weight	
	GSP 7035	KG/UD
KSHGR	217282	0.61



SCHRAUBEN CT2



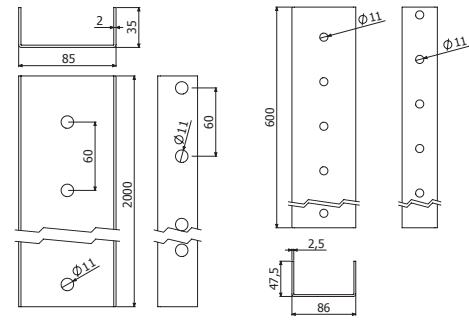
CT2	Material & Weight	
	PVCM1 UV	KG/UD
CT2 M10X100	217228	0.11



U-PROFIL PSHG-PSHGR



PSHG-PSHGR		
	PVCM1 UV	KG/UD
PSHG 2M	217281	2.29
PSHGR 600	217283	2.05
TFSHGR PVC	212112	0.25

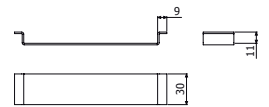


PSHGR

BIK10-BPE



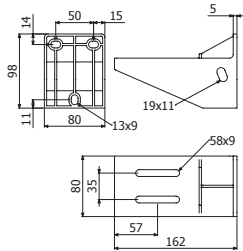
BIK10-BPE	e mm	Mod HxB				
			i304	KG/UD	i316	KG/UD
BIK10-BPE 60X100	1.5	60x100	217340	0.03	2/17347	0.03
BIK10-BPE 60X150	1.5	60x150	217341	0.05	2/17348	0.05
BIK10-BPE 60/100X200	1.5	60/100x200	217342	0.07	2/17349	0.07
BIK10-BPE 60/100X300	1.5	60/100x300	217343	0.09	2/17350	0.09
BIK10-BPE 100X400	2	100x400	217345	0.20	2/17352	0.20
BIK10-BPE 100X600	2	100x600	217346	0.49	2/17353	0.49



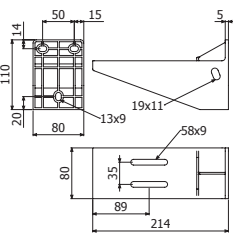
KONSOLE SHG



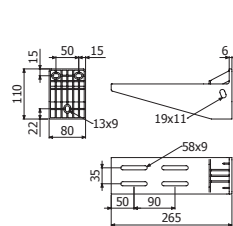
SHG	↔			
	mm	inch	PVMIUV	KG/UD
SHG 100	100	4"	210011	0.19
SHG 150	150	6"	210012	0.27
SHG 200	200	8"	210013	0.34
SHG 300	300	12"	210014	0.54
SHG 400	400	16"	210015	0.95
SHG 600	600	24"	210016	1.10



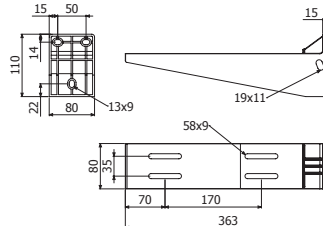
SHG100



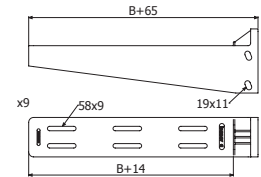
SHG150



SHG200

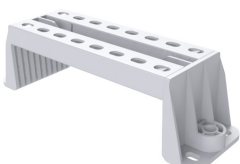


SHG300

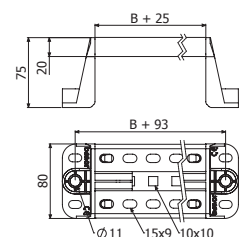


SHG 400/600

KONSOLE SVG



SVG	↔			
	mm	inch	PVMIUV	KG/UD
SVG 100	100	4"	210050	0.23
SVG 150	150	6"	210051	0.26
SVG 200	200	8"	210052	0.28
SVG 300	300	12"	210053	0.33
SVG 400	400	16"	210054	0.38
SVG 600	600	24"	210055	0.48





BE Basor

CABLE TRAY SPECIALIST



Basor Electric SA



@Basorelectric



/Basorelectric



www.basor.com